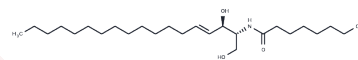


C8 D-threo Ceramide (d18:1/8:0)

Chemical Properties

CAS No. :	175892-43-0
Formula:	C ₂₆ H ₅₁ N ₃ O
Molecular Weight:	425.698
Storage:	Powder: -20°C for 3 years In solvent: -80°C for 1 year Actual storage temperature shall be subject to the COA.



Biological Description

Description	C8 D-threo Ceramide is a bioactive sphingolipid and cell-permeable analog of naturally occurring ceramides. It is cytotoxic to U937 cells (IC ₅₀ = 17 μM) and induces nuclear DNA fragmentation 5- to 6-fold more potently than C8 ceramide. C8 D-threo Ceramide is a substrate for E. coli diacylglycerol kinase. It activates ceramide-activated protein kinase (CAPK) in U937 cells. C8 D-threo Ceramide also enhances V. cholerae cytolysin pore formation in liposome lipid membranes, as measured by calcein release, with a 50% release dose (RD50) value of ~5 μg/ml.
Targets(IC50)	Apoptosis,Others

Solubility Information

Solubility	Ethanol: Soluble Chloroform: Soluble DMSO: Soluble DMF: Soluble (< 1 mg/ml refers to the product slightly soluble or insoluble)
------------	---

Preparing Stock Solutions

	1mg	5mg	10mg
1 mM	2.3491 mL	11.7454 mL	23.4907 mL
5 mM	0.4698 mL	2.3491 mL	4.6981 mL
10 mM	0.2349 mL	1.1745 mL	2.3491 mL
50 mM	0.047 mL	0.2349 mL	0.4698 mL

Please select the appropriate solvent to prepare the stock solution, according to the solubility of the product in different solvents. Please use it as soon as possible.

Note: The dilution table applies only to solid products. For liquid products, please calculate the stock solution based on the stated concentration and/or density.

Inhibitor · Natural Compounds · Compound Libraries · Recombinant Proteins

This product is for Research Use Only · Not for Human or Veterinary or Therapeutic Use

Tel:781-999-4286 E_mail:info@targetmol.com Address:34 Washington Street,Wellesley Hills,MA 02481