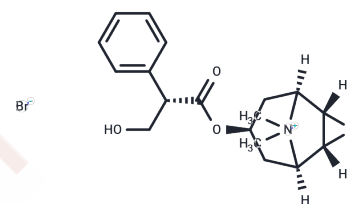


Methscopolamine

Chemical Properties

CAS No. :	155-41-9
Formula:	C ₁₈ H ₂₄ BrNO ₄
Molecular Weight:	398.29
Storage:	Powder: -20°C for 3 years In solvent: -80°C for 1 year Actual storage temperature shall be subject to the COA.



Biological Description

Description	Methscopolamine (Hyoscine methyl bromide) (Pamine), as a natural plant alkaloid, is a muscarinic acetylcholine receptor blocker.
Targets(IC50)	AChR

Solubility Information

Solubility	H ₂ O: 250 mg/mL (627.68 mM),Sonication is recommended. DMSO: 50 mg/mL (125.54 mM),Sonication is recommended. Ethanol: < 1 mg/mL (insoluble or slightly soluble), (< 1 mg/ml refers to the product slightly soluble or insoluble)
In vivo Formulation	10% DMSO+40% PEG300+5% Tween 80+45% Saline: 2 mg/mL (5.02 mM),Sonication is recommended. <i>Please add the solvents sequentially, clarifying the solution as much as possible before adding the next one. Dissolve by heating and/or sonication if necessary. Working solution is recommended to be prepared and used immediately. The formulation provided above is for reference purposes only. In vivo formulations may vary and should be modified based on specific experimental conditions.</i>

Preparing Stock Solutions

	1mg	5mg	10mg
1 mM	2.5107 mL	12.5537 mL	25.1073 mL
5 mM	0.5021 mL	2.5107 mL	5.0215 mL
10 mM	0.2511 mL	1.2554 mL	2.5107 mL
50 mM	0.0502 mL	0.2511 mL	0.5021 mL

Please select the appropriate solvent to prepare the stock solution, according to the solubility of the product in different solvents. Please use it as soon as possible.

Note: The dilution table applies only to solid products. For liquid products, please calculate the stock solution based on the stated concentration and/or density.

Reference

Soukup O, et al. Neurotox Res. 2009 Nov;16(4):372-7.

Inhibitor · Natural Compounds · Compound Libraries · Recombinant Proteins

This product is for Research Use Only · Not for Human or Veterinary or Therapeutic Use

Tel:781-999-4286 E_mail:info@targetmol.com Address:34 Washington Street,Wellesley Hills,MA 02481