

Dehydropachymic acid

Chemical Properties

CAS No. : 77012-31-8

Formula: C₃₃H₅₀O₅

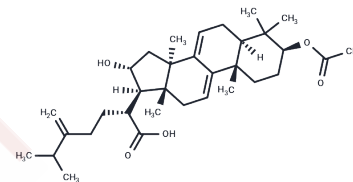
Molecular Weight: 526.75

Storage:

Keep away from direct sunlight, Keep away from moisture, Store at low temperature

Powder: -20°C for 3 years | In solvent: -80°C for 1 year

Actual storage temperature shall be subject to the COA.



Biological Description

| | |
|---------------|---|
| Description | (S)-Leucic acid is an amino acid metabolite used as a muscle builder. |
| Targets(IC50) | Autophagy, Immunology/Inflammation related |
| In vitro | Here, we show that a characterized mixture of triterpenes extracted from <i>P. cocos</i> (PTE) and three purified triterpenes: pachymic acid (PA), Dehydropachymic acid (DPA) and polyporenic acid C (PPAC) suppress the proliferation of the human pancreatic cancer cell lines Panc-1, MiaPaca-2, AsPc-1 and BxPc-3. Moreover, the most effective compound, PA, only slightly affects the proliferation of HPDE-6 normal pancreatic duct epithelial cells. The anti-proliferative effects of PTE on BxPc-3 cells are mediated by the cell cycle arrest at G0/G1 phase. DNA microarray analysis demonstrated that PTE significantly downregulates the expression of KRAS and matrix metalloproteinase-7 (MMP-7) in BxPc-3 cells. In addition, PTE and PA suppress the invasive behavior of BxPc-3 cells. The inhibition of invasiveness by PTE and PA was associated with the reduction of MMP-7 at the protein level and the role of MMP-7 further confirmed by the gene silencing of MMP-7 which also suppressed the invasiveness of BxPc-3 cells. |

Solubility Information

| | |
|------------|---|
| Solubility | DMSO: 5.27 mg/mL (10 mM), Sonication is recommended. (< 1 mg/ml refers to the product slightly soluble or insoluble) |
|------------|---|

Preparing Stock Solutions

| | 1mg | 5mg | 10mg |
|-------|------------|------------|-------------|
| 1 mM | 1.8984 mL | 9.4922 mL | 18.9843 mL |
| 5 mM | 0.3797 mL | 1.8984 mL | 3.7969 mL |
| 10 mM | 0.1898 mL | 0.9492 mL | 1.8984 mL |
| 50 mM | 0.038 mL | 0.1898 mL | 0.3797 mL |

Please select the appropriate solvent to prepare the stock solution, according to the solubility of the product in different solvents. Please use it as soon as possible.

Note: The dilution table applies only to solid products. For liquid products, please calculate the stock solution based on the stated concentration and/or density.

Reference

Triterpenes from *Poria cocos* suppress growth and invasiveness of pancreatic cancer cells through the downregulation of MMP-7. *Int J Oncol.* 2013 Jun;42(6):1869-74.

Inhibitor · Natural Compounds · Compound Libraries · Recombinant Proteins

This product is for Research Use Only · Not for Human or Veterinary or Therapeutic Use

Tel:781-999-4286 E_mail:info@targetmol.com Address:34 Washington Street,Wellesley Hills,MA 02481