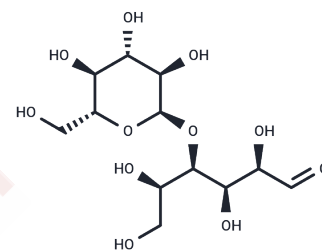


Maltose

Chemical Properties

CAS No. :	69-79-4
Formula:	C ₁₂ H ₂₂ O ₁₁
Molecular Weight:	342.30
Storage:	Powder: -20°C for 3 years In solvent: -80°C for 1 year Actual storage temperature shall be subject to the COA.



Biological Description

Description	Maltose (maltobiose) is a reducing sugar and is a disaccharide formed from two units of glucose bound by a (1-4) bond. Maltose can be used as an energy source for bacteria.
Targets(IC50)	Endogenous Metabolite

Solubility Information

Solubility	DMSO: 237 mg/mL (692.38 mM), Sonication is recommended. (< 1 mg/ml refers to the product slightly soluble or insoluble)
------------	--

Preparing Stock Solutions

	1mg	5mg	10mg
1 mM	2.9214 mL	14.6071 mL	29.2141 mL
5 mM	0.5843 mL	2.9214 mL	5.8428 mL
10 mM	0.2921 mL	1.4607 mL	2.9214 mL
50 mM	0.0584 mL	0.2921 mL	0.5843 mL

Please select the appropriate solvent to prepare the stock solution, according to the solubility of the product in different solvents. Please use it as soon as possible.

Note: The dilution table applies only to solid products. For liquid products, please calculate the stock solution based on the stated concentration and/or density.

Reference

Shu, Z., Peng, Y., Sun, L., Xiao, L., Liu, Y., & Li, J. et al. (2010). Maltose, a promising osmotic agent in peritoneal dialysis solution. *Medical Hypotheses*, 75(6), 645-647. doi: 10.1016/j.mehy.2010.08.007

Gao Z, Li L, Chen W, et al. Distinguishment of Glycan Isomers by Trapped Ion Mobility Spectrometry. *Analytical Chemistry*. 2021, 93(26): 9209-9217.

Gao Z, He Y, He Q, et al. Multidimensional identification of disaccharide isomers based on non-covalent complexes and tandem mass spectrometry. *Talanta*. 2022: 123674

Förster, H., & Hoos, I. (1975). The Suitability of Maltose for Parenteral Nutrition. *European Journal Of Intensive Care Medicine*, 1(3), 141-144. doi: 10.12007/bf200571662

Abbas, R., & Fisher, J. (1997). A Physiologically Based Pharmacokinetic Model for Trichloroethylene and Its Metabolites, Chloral Hydrate, Trichloroacetate, Dichloroacetate, Trichloroethanol, and Trichloroethanol Glucuronide in B6C3F1 Mice. *Toxicology And Applied Pharmacology*, 147(1), 15-30. doi: 10.12006/taap.1997.8190

Inhibitor · Natural Compounds · Compound Libraries · Recombinant Proteins

This product is for Research Use Only · Not for Human or Veterinary or Therapeutic Use

Tel:781-999-4286 E_mail:info@targetmol.com Address:34 Washington Street,Wellesley Hills,MA 02481