

PKC-IN-1

Chemical Properties

CAS No. : 1046787-18-1

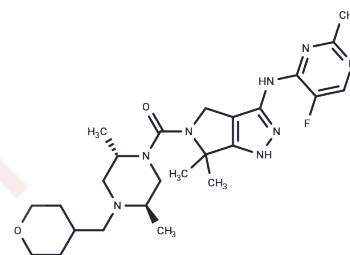
Formula: C₂₅H₃₇FN₈O₂

Molecular Weight: 500.61

Store at low temperature

Storage: Powder: -20°C for 3 years | In solvent: -80°C for 1 year

Actual storage temperature shall be subject to the COA.



Biological Description

Description	PKC-IN-1 is an ATP-competitive and reversible conventional PKC enzymes inhibitor (PKC α , PKC β I, PKC β II, PKC θ , PKC γ , PKC mu and PKC ϵ with IC ₅₀ s of 2.3, 8.1, 7.6, 25.6, 57.5, 314, 808 nM, respectively).
Targets(IC ₅₀)	PKC
In vitro	PKC-IN-1 is a potent, ATP-competitive, and reversible of conventional PKC enzymes (PKC α , PKC β I, PKC β II, PKC θ , PKC γ , PKC mu and PKC ϵ with Kis of 5.3 and 10.4 nM for human PKC β and PKC α , and IC ₅₀ s of 2.3, 8.1, 7.6, 25.6, 57.5, 314, 808 nM, respectively) [1].
In vivo	In Lewis rats, PKC-IN-1 dose-dependently and significantly reduces maximum EAE severity and end severity in the autoimmune encephalitis (EAE) model [1].

Solubility Information

Solubility	DMSO: 25 mg/mL (49.94 mM), Sonication is recommended. (< 1 mg/ml refers to the product slightly soluble or insoluble)
------------	--

Preparing Stock Solutions

	1mg	5mg	10mg
1 mM	1.9976 mL	9.9878 mL	19.9756 mL
5 mM	0.3995 mL	1.9976 mL	3.9951 mL
10 mM	0.1998 mL	0.9988 mL	1.9976 mL
50 mM	0.040 mL	0.1998 mL	0.3995 mL

Please select the appropriate solvent to prepare the stock solution, according to the solubility of the product in different solvents. Please use it as soon as possible.

Note: The dilution table applies only to solid products. For liquid products, please calculate the stock solution based on the stated concentration and/or density.

Reference

Michael Niesman, et al. Treatment of autoimmune disease. WO2015179847A1.

Inhibitor · Natural Compounds · Compound Libraries · Recombinant Proteins

This product is for Research Use Only · Not for Human or Veterinary or Therapeutic Use

Tel:781-999-4286 E_mail:info@targetmol.com Address:34 Washington Street,Wellesley Hills,MA 02481