

Cholesteryl palmitate

Chemical Properties

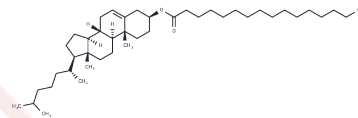
CAS No. : 601-34-3

Formula: C₄₃H₇₆O₂

Molecular Weight: 625.06

Storage: Powder: -20°C for 3 years | In solvent: -80°C for 1 year

Actual storage temperature shall be subject to the COA.



Biological Description

Description	Cholesteryl palmitic acid is a cholesteryl ester. A cholesteryl ester is an ester of cholesterol. Fatty acid esters of cholesterol constitute about two-thirds of the cholesterol in the plasma. Cholesterol is a sterol (a combination of steroid and alcohol) and a lipid found in the cell membranes of all body tissues and transported in the blood plasma of all animals. The accumulation of cholesterol esters in the arterial intima (the innermost layer of an artery, in direct contact with the flowing blood) is a characteristic feature of atherosclerosis. Atherosclerosis is a disease affecting arterial blood vessels. It is a chronic inflammatory response in the walls of arteries, in large part to the deposition of lipoproteins (plasma proteins that carry cholesterol and triglycerides).
Targets(IC50)	Endogenous Metabolite

Solubility Information

Solubility	DMSO: Slightly soluble, (< 1 mg/ml refers to the product slightly soluble or insoluble)
------------	---

Preparing Stock Solutions

	1mg	5mg	10mg
1 mM	1.5998 mL	7.9992 mL	15.9985 mL
5 mM	0.320 mL	1.5998 mL	3.1997 mL
10 mM	0.160 mL	0.7999 mL	1.5998 mL
50 mM	0.032 mL	0.160 mL	0.320 mL

Please select the appropriate solvent to prepare the stock solution, according to the solubility of the product in different solvents. Please use it as soon as possible.

Note: The dilution table applies only to solid products. For liquid products, please calculate the stock solution based on the stated concentration and/or density.

Reference

Ludmir J, et al. Amniotic fluid cholesteryl palmitate in pregnancies complicated by diabetes mellitus. *Obstet Gynecol.* 1988 Sep;72(3 Pt 1):360-2.

Inhibitor · Natural Compounds · Compound Libraries · Recombinant Proteins

This product is for Research Use Only · Not for Human or Veterinary or Therapeutic Use

Tel:781-999-4286 E_mail:info@targetmol.com Address:34 Washington Street,Wellesley Hills,MA 02481