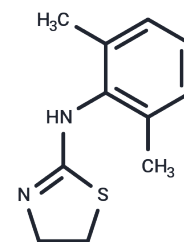


Jingsongling

Chemical Properties

CAS No. :	25332-05-2
Formula:	C ₁₁ H ₁₄ N ₂ S
Molecular Weight:	206.31
Storage:	Powder: -20°C for 3 years In solvent: -80°C for 1 year Actual storage temperature shall be subject to the COA.



Biological Description

Description	Jingsongling is a biochemical.
Targets(IC50)	Others

Preparing Stock Solutions

	1mg	5mg	10mg
1 mM	4.8471 mL	24.2354 mL	48.4707 mL
5 mM	0.9694 mL	4.8471 mL	9.6941 mL
10 mM	0.4847 mL	2.4235 mL	4.8471 mL
50 mM	0.0969 mL	0.4847 mL	0.9694 mL

Please select the appropriate solvent to prepare the stock solution, according to the solubility of the product in different solvents. Please use it as soon as possible.

Note: The dilution table applies only to solid products. For liquid products, please calculate the stock solution based on the stated concentration and/or density.

Reference

- Changmin H, Jianguo C, Dongming L, Guohong L, Mingxing D. Effects of xylazole alone and in combination with ketamine on the metabolic and neurohumoral responses in healthy dogs. *Vet Anaesth Analg*. 2010 Jul;37(4):322-8. doi: 10.1111/j.1467-2995.2010.00538.x. PubMed PMID: 20487431.
- Tao R, Hjorth S. Alpha 2-adrenoceptor modulation of rat ventral hippocampal 5-hydroxytryptamine release in vivo. *Naunyn Schmiedebergs Arch Pharmacol*. 1992 Feb;345(2):137-43. PubMed PMID: 1349158.
- Guo LQ, Huang RH. [Studies on biotransformation of jing song ling, a new anesthetic]. *Yao Xue Xue Bao*. 1990;25(2):95-100. Chinese. PubMed PMID: 2239329.
- Hsu WH, Rong YF, Hembrough FB. The effects of jingsongling, a xylazine analog, on mean arterial blood pressure and heart rate in dogs--influences of yohimbine, tolazoline, prazosin, and atropine. *J Vet Pharmacol Ther*. 1989 Sep;12(3):283-8. PubMed PMID: 2810477.

Inhibitor · Natural Compounds · Compound Libraries · Recombinant Proteins

This product is for Research Use Only · Not for Human or Veterinary or Therapeutic Use

Tel:781-999-4286 E_mail:info@targetmol.com Address:34 Washington Street,Wellesley Hills,MA 02481