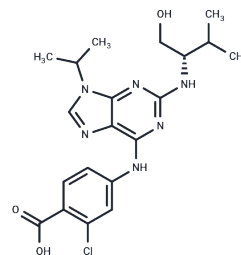


(S)-Purvalanol B

Chemical Properties

CAS No. :	2310135-61-4
Formula:	C ₂₀ H ₂₅ ClN ₆ O ₃
Molecular Weight:	432.9
Storage:	Powder: -20°C for 3 years In solvent: -80°C for 1 year Actual storage temperature shall be subject to the COA.



Biological Description

Description	(S)-Purvalanol B, the S enantiomer of Purvalanol B, is an inhibitor of cyclin-dependent kinase (CDK).
Targets(IC50)	Bcl-2 Family,Others

Solubility Information

Solubility	DMSO: 76.7 mg/mL (177.18 mM),Sonication and heating are recommended. (< 1 mg/ml refers to the product slightly soluble or insoluble)
In vivo Formulation	10% DMSO+40% PEG300+5% Tween-80+45% Saline: 3.3 mg/mL (7.62 mM),Sonication is recommended. <i>Please add the solvents sequentially, clarifying the solution as much as possible before adding the next one. Dissolve by heating and/or sonication if necessary. Working solution is recommended to be prepared and used immediately. The formulation provided above is for reference purposes only. In vivo formulations may vary and should be modified based on specific experimental conditions.</i>

Preparing Stock Solutions

	1mg	5mg	10mg
1 mM	2.310 mL	11.550 mL	23.100 mL
5 mM	0.462 mL	2.310 mL	4.620 mL
10 mM	0.231 mL	1.155 mL	2.310 mL
50 mM	0.0462 mL	0.231 mL	0.462 mL

Please select the appropriate solvent to prepare the stock solution, according to the solubility of the product in different solvents. Please use it as soon as possible.

Note: The dilution table applies only to solid products. For liquid products, please calculate the stock solution based on the stated concentration and/or density.

Reference

Bullard KM, Effects of cyclin-dependent kinase inhibitor Purvalanol B application on protein expression and developmental progression in intra-erythrocytic Plasmodium falciparum parasites. Malar J. 2015 Apr 8;14:147.

Inhibitor · Natural Compounds · Compound Libraries · Recombinant Proteins

This product is for Research Use Only · Not for Human or Veterinary or Therapeutic Use

Tel:781-999-4286 E_mail:info@targetmol.com Address:34 Washington Street,Wellesley Hills,MA 02481