

## Methyl petroselaidate

## Chemical Properties

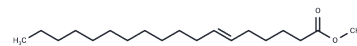
CAS No. : 14620-36-1

Formula: C19H36O2

Molecular Weight: 296.49

Storage: Store at low temperature  
Powder: -20°C for 3 years | In solvent: -80°C for 1 year

Actual storage temperature shall be subject to the COA.



## Biological Description

Description	Methyl petroselaidate (methyl (E)-octadec-6-enoate) is a long-chain fatty acid ester commonly used as an industrial lubricant.
Targets(IC50)	Others

## Preparing Stock Solutions

	1mg	5mg	10mg
1 mM	3.3728 mL	16.864 mL	33.728 mL
5 mM	0.6746 mL	3.3728 mL	6.7456 mL
10 mM	0.3373 mL	1.6864 mL	3.3728 mL
50 mM	0.0675 mL	0.3373 mL	0.6746 mL

Please select the appropriate solvent to prepare the stock solution, according to the solubility of the product in different solvents. Please use it as soon as possible.

Note: The dilution table applies only to solid products. For liquid products, please calculate the stock solution based on the stated concentration and/or density.

## Reference

Scampicchio, M., et al. Multi-method Approach to Trace the Geographical Origin of Alpine Milk: a Case Study of Tyrol Region. Food Anal. Methods 9, 1262-1273 (2016).

**Inhibitor · Natural Compounds · Compound Libraries · Recombinant Proteins**

This product is for Research Use Only · Not for Human or Veterinary or Therapeutic Use

Tel:781-999-4286 E\_mail:info@targetmol.com Address:34 Washington Street,Wellesley Hills,MA 02481