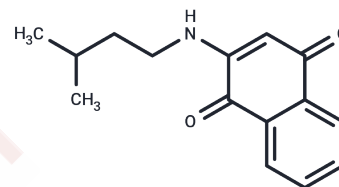


2-(Isopentylamino)naphthalene-1,4-dione

Chemical Properties

CAS No. :	1607447-79-9
Formula:	C ₁₅ H ₁₇ NO ₂
Molecular Weight:	243.306
Storage:	Powder: -20°C for 3 years In solvent: -80°C for 1 year Actual storage temperature shall be subject to the COA.



Biological Description

Description	2-(Isopentylamino)naphthalene-1,4-dione is a vitamin K analog. It inhibits spasms induced by pentylene tetrazole and tonic hindlimb extension induced by maximal electroshock (MES) in mice (ED ₅₀ s = 349.2 and 108.1 mg/kg, respectively). It also protects mice against seizures in the 6 Hz psychomotor seizure test (ED ₅₀ s = 152.7 and 263.7 mg/kg at stimulus intensities of 32 and 44 mA, respectively).
Targets(IC ₅₀)	Others, Cytochromes P450

Solubility Information

Solubility	DMSO: 30 mg/mL (123.3 mM), Sonication is recommended. DMF: 30 mg/mL (123.3 mM), Sonication is recommended. DMSO:PBS (pH 7.2) (1:2): 0.33 mg/mL (1.36 mM), Sonication is recommended. Ethanol: 20 mg/mL (82.2 mM), Sonication is recommended. (< 1 mg/ml refers to the product slightly soluble or insoluble)
------------	---

Preparing Stock Solutions

	1mg	5mg	10mg
1 mM	4.110 mL	20.5499 mL	41.0998 mL
5 mM	0.822 mL	4.110 mL	8.220 mL
10 mM	0.411 mL	2.055 mL	4.110 mL
50 mM	0.0822 mL	0.411 mL	0.822 mL

Please select the appropriate solvent to prepare the stock solution, according to the solubility of the product in different solvents. Please use it as soon as possible.

Note: The dilution table applies only to solid products. For liquid products, please calculate the stock solution based on the stated concentration and/or density.

Reference

Li, X., Himes, R.A., Prosser, L.C., et al. Discovery of the first vitamin K analogue as a potential treatment of pharmaco-resistant seizures. *J. Med. Chem.* 63(11)5865-5878(2020)

Inhibitor · Natural Compounds · Compound Libraries · Recombinant Proteins

This product is for Research Use Only · Not for Human or Veterinary or Therapeutic Use

Tel: 781-999-4286 E_mail: info@targetmol.com Address: 34 Washington Street, Wellesley Hills, MA 02481