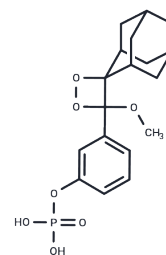


AMPPD

Chemical Properties

CAS No. :	122341-56-4
Formula:	C ₁₈ H ₂₃ O ₇ P
Molecular Weight:	382.34
Storage:	Powder: -20°C for 3 years In solvent: -80°C for 1 year Actual storage temperature shall be subject to the COA.



Biological Description

Description	AMPPD (Lumi-Phos Plus) is a 1,2-dioxo-cyclohexane derivative and a substrate for hypersensitive alkaline phosphatase.
Targets(IC50)	Others,Phosphatase

Solubility Information

Solubility	H ₂ O: 4 mg/mL (10.46 mM),Sonication is recommended. (< 1 mg/ml refers to the product slightly soluble or insoluble)
------------	--

Preparing Stock Solutions

	1mg	5mg	10mg
1 mM	2.6155 mL	13.0774 mL	26.1547 mL
5 mM	0.5231 mL	2.6155 mL	5.2309 mL
10 mM	0.2615 mL	1.3077 mL	2.6155 mL
50 mM	0.0523 mL	0.2615 mL	0.5231 mL

Please select the appropriate solvent to prepare the stock solution, according to the solubility of the product in different solvents. Please use it as soon as possible.

Note: The dilution table applies only to solid products. For liquid products, please calculate the stock solution based on the stated concentration and/or density.

Reference

Yue L, Liu YJ. Mechanism of AMPPD Chemiluminescence in a Different Voice. J Chem Theory Comput. 2013 May 14;9(5):2300-12.

Inhibitor · Natural Compounds · Compound Libraries · Recombinant Proteins

This product is for Research Use Only · Not for Human or Veterinary or Therapeutic Use

Tel:781-999-4286 E_mail:info@targetmol.com Address:34 Washington Street,Wellesley Hills,MA 02481