

Isometheptene mucate

Chemical Properties

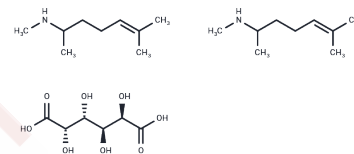
CAS No. : 7492-31-1

Formula: C₂₄H₄₈N₂O₈

Molecular Weight: 492.654

Storage: Powder: -20°C for 3 years | In solvent: -80°C for 1 year

Actual storage temperature shall be subject to the COA.



Biological Description

Description	Isometheptene mucate is a sympathomimetic agent, an indirectly acting adrenergic receptor agonist, which can be used in the study of migraine.
Targets(IC50)	Others

Preparing Stock Solutions

	1mg	5mg	10mg
1 mM	2.0298 mL	10.1492 mL	20.2984 mL
5 mM	0.406 mL	2.0298 mL	4.0597 mL
10 mM	0.203 mL	1.0149 mL	2.0298 mL
50 mM	0.0406 mL	0.203 mL	0.406 mL

Please select the appropriate solvent to prepare the stock solution, according to the solubility of the product in different solvents. Please use it as soon as possible.

Note: The dilution table applies only to solid products. For liquid products, please calculate the stock solution based on the stated concentration and/or density.

Inhibitor · Natural Compounds · Compound Libraries · Recombinant Proteins

This product is for Research Use Only · Not for Human or Veterinary or Therapeutic Use

Tel: 781-999-4286

E_mail: info@targetmol.com

Address: 34 Washington Street, Wellesley Hills, MA 02481