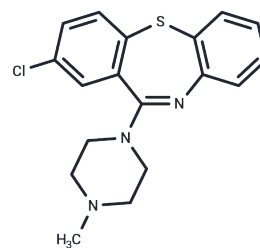


Clothiapine

Chemical Properties

CAS No. :	2058-52-8
Formula:	C ₁₈ H ₁₈ ClN ₃ S
Molecular Weight:	343.87
Storage:	Store at low temperature Powder: -20°C for 3 years In solvent: -80°C for 1 year <small>Actual storage temperature shall be subject to the COA.</small>



Biological Description

Description	Clothiapine (HF 2159) is an atypical antipsychotic agent with potent anti 5-hydroxytryptaminergic and serotonergic activity, which has been used in the study of schizophrenia.
Targets(IC50)	5-HT Receptor
In vitro	The effect of thiophene on ATPase activity and associated oxygen uptake as assessed by photoelectric, Clothiapine was investigated at 1-0.001 mM. 0.1 mM Clothiapine inhibited sodium-potassium ATPase activity and associated QO ₂ by 30-40%. [5]

Solubility Information

Solubility	DMSO: 50 mg/mL (145.4 mM), Sonication is recommended. (< 1 mg/ml refers to the product slightly soluble or insoluble)
------------	---

Preparing Stock Solutions

	1mg	5mg	10mg
1 mM	2.9081 mL	14.5404 mL	29.0808 mL
5 mM	0.5816 mL	2.9081 mL	5.8162 mL
10 mM	0.2908 mL	1.454 mL	2.9081 mL
50 mM	0.0582 mL	0.2908 mL	0.5816 mL

Please select the appropriate solvent to prepare the stock solution, according to the solubility of the product in different solvents. Please use it as soon as possible.

Note: The dilution table applies only to solid products. For liquid products, please calculate the stock solution based on the stated concentration and/or density.

Reference

- Mazhari S, et al. Chlorpromazine versus clotiapine for schizophrenia. *Cochrane Database Syst Rev.* 2017 Apr 7;4: CD011810. doi: 10.1002/14651858.CD011810.pub2. Review.
- Claeys J, et al. [Clotiapine in the treatment of acutely agitated patients: hardly any evidence]. *Tijdschr Psychiatr.* 2017;59(3):175-180.
- Busardò FP, et al. A Very Unusual Accidental Mechanical Asphyxia of Choking with a Whole Solea Solea. *J Forensic Sci.* 2017 Mar;62(2):511-514. doi: 10.1111/1556-4029.13261. Epub 2016 Dec 6.
- Lurie Y, et al. Pediatric clotiapine poisoning: clinical manifestations and toxicokinetics. *Am J Emerg Med.* 2016 Dec; 34(12):2469.e1-2469.e2.
- Velasco-Martín A, et al. Effects of several neuroleptics, antidepressants and monoamine uptake blockers on ATPase activity and related oxygen uptake in rat brain in vitro. *Methods Find Exp Clin Pharmacol.* 1989 Dec;11(12): 737-41.

Inhibitor · Natural Compounds · Compound Libraries · Recombinant Proteins

This product is for Research Use Only · Not for Human or Veterinary or Therapeutic Use

Tel: 781-999-4286 E_mail: info@targetmol.com Address: 34 Washington Street, Wellesley Hills, MA 02481