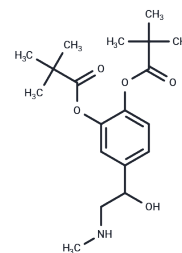


Dipivefrin

Chemical Properties

CAS No. :	52365-63-6
Formula:	C ₁₉ H ₂₉ NO ₅
Molecular Weight:	351.44
Storage:	Powder: -20°C for 3 years In solvent: -80°C for 1 year Actual storage temperature shall be subject to the COA.



Biological Description

Description	Dipivefrin is a prodrug of epinephrine, and is used to treat open-angle glaucoma.
Targets(IC50)	Others,Endogenous Metabolite,Adrenergic Receptor

Preparing Stock Solutions

	1mg	5mg	10mg
1 mM	2.8454 mL	14.2272 mL	28.4544 mL
5 mM	0.5691 mL	2.8454 mL	5.6909 mL
10 mM	0.2845 mL	1.4227 mL	2.8454 mL
50 mM	0.0569 mL	0.2845 mL	0.5691 mL

Please select the appropriate solvent to prepare the stock solution, according to the solubility of the product in different solvents. Please use it as soon as possible.

Note: The dilution table applies only to solid products. For liquid products, please calculate the stock solution based on the stated concentration and/or density.

Reference

- Groh MJ, Michelson G, Harazny J, Groh M, Koschinsky K. [Changes in retinal blood flow by topical administration of 0.1% dipivefrin]. *Ophthalmologie*. 1999 Nov;96(11):706-10. German. PubMed PMID: 10631832.
- Edgar DF, Crabb DP, Rudnicka AR, Lawrenson JG, Guttridge NM, O'Brien CJ. Effects of dipivefrin and pilocarpine on pupil diameter, automated perimetry and LogMAR acuity. *Graefes Arch Clin Exp Ophthalmol*. 1999 Feb;37(2):117-24. PubMed PMID: 9987628.
- Rossetti L, Barbieri P, Velati P, Bujtar E, Orzalesi N. The efficacy of the combination of l-moprolol and dipivefrin in reducing the intraocular pressure in primary open-angle glaucoma or in ocular hypertension. *Graefes Arch Clin Exp Ophthalmol*. 1994 Nov;32(11):670-4. PubMed PMID: 7843592.
- Michelson G, Groh MJ. Dipivefrin reduces blood flow in the ciliary body in humans. *Ophthalmology*. 1994 Apr;101(4):659-64. PubMed PMID: 8152760.

Inhibitor · Natural Compounds · Compound Libraries · Recombinant Proteins

This product is for Research Use Only · Not for Human or Veterinary or Therapeutic Use

Tel:781-999-4286 E_mail:info@targetmol.com Address:34 Washington Street,Wellesley Hills,MA 02481