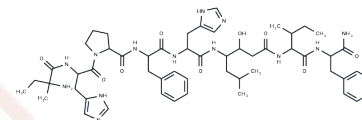


## Renin inhibitory peptide, statine

## Chemical Properties

CAS No. :	94162-23-9
Formula:	C54H77N13O9
Molecular Weight:	1052.292
Storage:	Keep away from moisture Powder: -20°C for 3 years   In solvent: -80°C for 1 year <small>Actual storage temperature shall be subject to the COA.</small>



## Biological Description

Description	Renin inhibitory peptide, statine is a effective, specific statine-containing renin inhibitor.
-------------	--

## Preparing Stock Solutions

	1mg	5mg	10mg
1 mM	0.9503 mL	4.7515 mL	9.5031 mL
5 mM	0.1901 mL	0.9503 mL	1.9006 mL
10 mM	0.095 mL	0.4752 mL	0.9503 mL
50 mM	0.019 mL	0.095 mL	0.1901 mL

Please select the appropriate solvent to prepare the stock solution, according to the solubility of the product in different solvents. Please use it as soon as possible.

Note: The dilution table applies only to solid products. For liquid products, please calculate the stock solution based on the stated concentration and/or density.

## Reference

- Blaine EH, Schorn TW, Boger J. Statine-containing renin inhibitor. Dissociation of blood pressure lowering and renin inhibition in sodium-deficient dogs. *Hypertension*. 1984 Mar-Apr;6(2 Pt 2):1111-8. PubMed PMID: 6373590.
- Hui KY, Carlson WD, Bernatowicz MS, Haber E. Analysis of structure-activity relationships in renin substrate analogue inhibitory peptides. *J Med Chem*. 1987 Aug;30(8):1287-95. PubMed PMID: 3302256.
- Leckie BJ, Grant J, Hallett A, Hughes M, Jones DM, Szelke M, Tree M. Peptide inhibitors of renin. *Scott Med J*. 1984 Apr;29(2):125-6. PubMed PMID: 6397858.
- Veber DF, Bock MG, Brady SF, Ulm EH, Cochran DW, Smith GM, LaMont BI, Dipardo RM, Poe M, Freidinger RM, et al. Renin inhibitors containing 2-substituted statine. *Biochem Soc Trans*. 1984 Dec;12(6):956-9. PubMed PMID: 6442237.

**Inhibitor · Natural Compounds · Compound Libraries · Recombinant Proteins**

This product is for Research Use Only · Not for Human or Veterinary or Therapeutic Use

Tel:781-999-4286 E\_mail:info@targetmol.com Address:34 Washington Street,Wellesley Hills,MA 02481