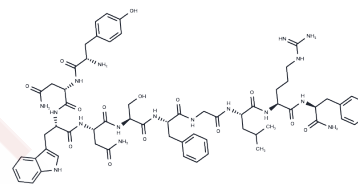


## Kisspeptin-10, human

## Chemical Properties

CAS No. :	374675-21-5
Formula:	C63H83N17O14
Molecular Weight:	1302.462
Storage:	Keep away from moisture Powder: -20°C for 3 years   In solvent: -80°C for 1 year <small>Actual storage temperature shall be subject to the COA.</small>



## Biological Description

Description	Kisspeptin-10, human is an effective vasoconstrictor and inhibitor of angiogenesis.
Targets(IC50)	Kisspeptin

## Solubility Information

Solubility	H2O: Soluble, ( $< 1$ mg/ml refers to the product slightly soluble or insoluble)
------------	---

## Preparing Stock Solutions

	1mg	5mg	10mg
1 mM	0.7678 mL	3.8389 mL	7.6778 mL
5 mM	0.1536 mL	0.7678 mL	1.5356 mL
10 mM	0.0768 mL	0.3839 mL	0.7678 mL
50 mM	0.0154 mL	0.0768 mL	0.1536 mL

Please select the appropriate solvent to prepare the stock solution, according to the solubility of the product in different solvents. Please use it as soon as possible.

Note: The dilution table applies only to solid products. For liquid products, please calculate the stock solution based on the stated concentration and/or density.

## Reference

Son HE, et al. Kisspeptin-10 (KP-10) stimulates osteoblast differentiation through GPR54-mediated regulation of BMP2 expression and activation. Sci Rep. 2018 Feb 1;8(1):2134.

**Inhibitor · Natural Compounds · Compound Libraries · Recombinant Proteins**

This product is for Research Use Only · Not for Human or Veterinary or Therapeutic Use

Tel:781-999-4286 E\_mail:info@targetmol.com Address:34 Washington Street,Wellesley Hills,MA 02481