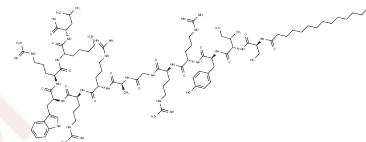


ZIP

Chemical Properties

CAS No. :	863987-12-6
Formula:	C90H154N30O17
Molecular Weight:	1928.4
Storage:	Keep away from moisture Powder: -20°C for 3 years In solvent: -80°C for 1 year <small>Actual storage temperature shall be subject to the COA.</small>



Biological Description

Description	Novel, cell-permeable inhibitor of protein kinase M ζ (PKM ζ), a constitutively active, atypical PKC isozyme involved in LTP maintenance. Selectively blocks PKM ζ -induced synaptic potentiation in hippocampal slices in vitro. Reverses late-phase LTP (IC ₅₀ = 1 - 2.5 μ M) and produces persistent loss of 1-day-old spatial memory following central administration in vivo.
Targets(IC ₅₀)	PKC

Solubility Information

Solubility	H ₂ O: 1 mg/mL (0.52 mM), Sonication is recommended. (< 1 mg/ml refers to the product slightly soluble or insoluble)
------------	--

Preparing Stock Solutions

	1mg	5mg	10mg
1 mM	0.5186 mL	2.5928 mL	5.1856 mL
5 mM	0.1037 mL	0.5186 mL	1.0371 mL
10 mM	0.0519 mL	0.2593 mL	0.5186 mL
50 mM	0.0104 mL	0.0519 mL	0.1037 mL

Please select the appropriate solvent to prepare the stock solution, according to the solubility of the product in different solvents. Please use it as soon as possible.

Note: The dilution table applies only to solid products. For liquid products, please calculate the stock solution based on the stated concentration and/or density.

Reference

Serrano et al (2005) Persistent phosphorylation by protein kinase Mz maintains late-phase long-term potentiation. J.Neurosci. 25 1979 PMID:

Pastalkova et al (2006) Storage of spatial information by the maintenance mechanism of LTP. Science 313 1141 PMID:

Inhibitor · Natural Compounds · Compound Libraries · Recombinant Proteins

This product is for Research Use Only· Not for Human or Veterinary or Therapeutic Use

Tel:781-999-4286 E_mail:info@targetmol.com Address:34 Washington Street,Wellesley Hills,MA 02481