

## SC-Val-Cit-PAB

## Chemical Properties

CAS No. :

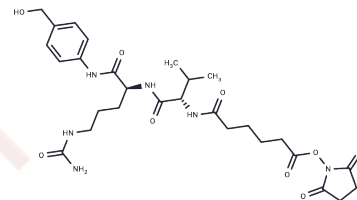
Formula: C<sub>28</sub>H<sub>40</sub>N<sub>6</sub>O<sub>9</sub>

Molecular Weight: 604.65

Keep away from direct sunlight

Storage: Powder: -20°C for 3 years | In solvent: -80°C for 1 year

Actual storage temperature shall be subject to the COA.



## Biological Description

Description	SC-Val-Cit-PAB is a cleavable ADC linker for antibody-drug conjugates (ADCs).
Targets(IC50)	ADC Linker,PROTAC Linker

## Preparing Stock Solutions

	1mg	5mg	10mg
1 mM	1.6538 mL	8.2692 mL	16.5385 mL
5 mM	0.3308 mL	1.6538 mL	3.3077 mL
10 mM	0.1654 mL	0.8269 mL	1.6538 mL
50 mM	0.0331 mL	0.1654 mL	0.3308 mL

Please select the appropriate solvent to prepare the stock solution, according to the solubility of the product in different solvents. Please use it as soon as possible.

Note: The dilution table applies only to solid products. For liquid products, please calculate the stock solution based on the stated concentration and/or density.

Inhibitor · Natural Compounds · Compound Libraries · Recombinant Proteins

This product is for Research Use Only · Not for Human or Veterinary or Therapeutic Use

Tel:781-999-4286 E\_mail:info@targetmol.com Address:34 Washington Street,Wellesley Hills,MA 02481