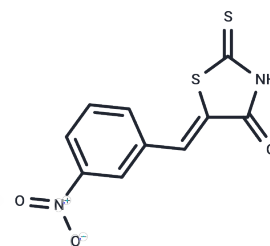


## ATPase-IN-3

## Chemical Properties

CAS No. :	1134203-12-5
Formula:	C10H6N2O3S2
Molecular Weight:	266.3
Storage:	Powder: -20°C for 3 years   In solvent: -80°C for 1 year Actual storage temperature shall be subject to the COA.



## Biological Description

Description	ATPase-IN-3 is an ATPase (ATPase) inhibitor that can be used in the study of metabolism-related diseases.
Targets(IC50)	Apoptosis,ATPase,MDM-2/p53

## Solubility Information

Solubility	DMSO: 100 mg/mL (375.52 mM),Sonication is recommended. (< 1 mg/ml refers to the product slightly soluble or insoluble)
------------	---

## Preparing Stock Solutions

	1mg	5mg	10mg
1 mM	3.7552 mL	18.7758 mL	37.5516 mL
5 mM	0.751 mL	3.7552 mL	7.5103 mL
10 mM	0.3755 mL	1.8776 mL	3.7552 mL
50 mM	0.0751 mL	0.3755 mL	0.751 mL

Please select the appropriate solvent to prepare the stock solution, according to the solubility of the product in different solvents. Please use it as soon as possible.

Note: The dilution table applies only to solid products. For liquid products, please calculate the stock solution based on the stated concentration and/or density.

## Reference

Ameen RQ, et al. Gastroprotective effect of rhodanine and 2,4-thiazolidinediones scaffolds in rat stomachs by contribution of anti-apoptotic (BCL-2) and tumor suppressor (P53) proteins. Sci Rep. 2024;14(1):1699. Published 2024 Jan 19.

**Inhibitor · Natural Compounds · Compound Libraries · Recombinant Proteins**

This product is for Research Use Only · Not for Human or Veterinary or Therapeutic Use

Tel:781-999-4286 E\_mail:info@targetmol.com Address:34 Washington Street,Wellesley Hills,MA 02481