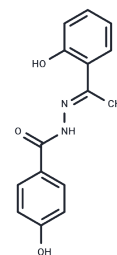


LSD1-IN-30

Chemical Properties

CAS No. :	1289575-45-6
Formula:	C ₁₅ H ₁₄ N ₂ O ₃
Molecular Weight:	270.28
Storage:	Powder: -20°C for 3 years In solvent: -80°C for 1 year Actual storage temperature shall be subject to the COA.



Biological Description

Description	LSD1-IN-30 is a lysine-specific demethylase 1 (LSD1) inhibitor with anticancer activity for the study of small cell lung cancer and acute myeloid leukemia.
Targets(IC50)	Histone Demethylase

Solubility Information

Solubility	DMSO: 80 mg/mL (295.99 mM), Sonication is recommended. (< 1 mg/ml refers to the product slightly soluble or insoluble)
In vivo Formulation	10% DMSO+40% PEG300+5% Tween 80+45% Saline: 3.3 mg/mL (12.21 mM), Sonication is recommended. <i>Please add the solvents sequentially, clarifying the solution as much as possible before adding the next one. Dissolve by heating and/or sonication if necessary. Working solution is recommended to be prepared and used immediately. The formulation provided above is for reference purposes only. In vivo formulations may vary and should be modified based on specific experimental conditions.</i>

Preparing Stock Solutions

	1mg	5mg	10mg
1 mM	3.6999 mL	18.4993 mL	36.9987 mL
5 mM	0.740 mL	3.6999 mL	7.3997 mL
10 mM	0.370 mL	1.8499 mL	3.6999 mL
50 mM	0.074 mL	0.370 mL	0.740 mL

Please select the appropriate solvent to prepare the stock solution, according to the solubility of the product in different solvents. Please use it as soon as possible.

Note: The dilution table applies only to solid products. For liquid products, please calculate the stock solution based on the stated concentration and/or density.

Reference

Venkataswamy Sorna, et al. High-Throughput Virtual Screening Identifies Novel N'-(1-Phenylethylidene)-benzohydrazides as Potent, Specific, and Reversible LSD1 Inhibitors. J Med Chem . 2013 Dec 12;56(23):9496-508.

Inhibitor · Natural Compounds · Compound Libraries · Recombinant Proteins

This product is for Research Use Only· Not for Human or Veterinary or Therapeutic Use

Tel:781-999-4286 E_mail:info@targetmol.com Address:34 Washington Street,Wellesley Hills,MA 02481