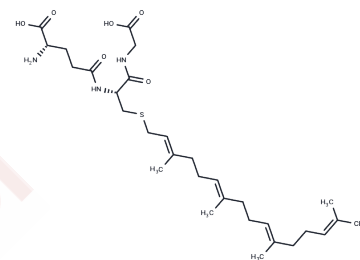


## S-Geranylgeranyl-L-glutathione

## Chemical Properties

CAS No. :	2364639-42-7
Formula:	C30H49N3O6S
Molecular Weight:	579.80
Storage:	Powder: -20°C for 3 years   In solvent: -80°C for 1 year Actual storage temperature shall be subject to the COA.



## Biological Description

Description	S-Geranylgeranyl-L-glutathione acts as a ligand for the orphan G protein-coupled receptor (GPCR) P2RY8, displaying selective affinity by inducing internalization of P2RY8 in preference to the sphingosine-1-phosphate receptor 2 (S1P2), GPR55, cysteinyl leukotriene receptor 1 (CysLT1 receptor), and the CysLT2 receptor at a concentration of 100 nM. Additionally, at a lower concentration of 10 nM, S-Geranylgeranyl-L-glutathione inhibits the chemokine (C-X-C motif) ligand 12-induced migration of both P2RY8-expressing WEHI-231 B cell lymphoma cells and human tonsil germinal center B cells.
Targets(IC50)	Others

## Solubility Information

Solubility	DMSO: 1 mg/mL (1.72 mM), Sonication is recommended. (< 1 mg/ml refers to the product slightly soluble or insoluble)
------------	--

## Preparing Stock Solutions

	1mg	5mg	10mg
1 mM	1.7247 mL	8.6237 mL	17.2473 mL
5 mM	0.3449 mL	1.7247 mL	3.4495 mL
10 mM	0.1725 mL	0.8624 mL	1.7247 mL
50 mM	0.0345 mL	0.1725 mL	0.3449 mL

Please select the appropriate solvent to prepare the stock solution, according to the solubility of the product in different solvents. Please use it as soon as possible.

Note: The dilution table applies only to solid products. For liquid products, please calculate the stock solution based on the stated concentration and/or density.

**Inhibitor · Natural Compounds · Compound Libraries · Recombinant Proteins**

This product is for Research Use Only · Not for Human or Veterinary or Therapeutic Use

Tel:781-999-4286 E\_mail:info@targetmol.com Address:34 Washington Street,Wellesley Hills,MA 02481