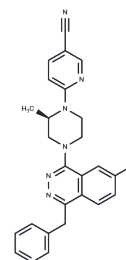


S1PL-IN-31

Chemical Properties

CAS No. : 1538574-95-6
Formula: C₂₆H₂₃ClN₆
Molecular Weight: 454.95
Storage: Powder: -20°C for 3 years | In solvent: -80°C for 1 year
Actual storage temperature shall be subject to the COA.



Biological Description

Description	S1PL-IN-31 is a dual-function chemical compound acting as an inhibitor of sphingosine-1-phosphate (S1P) lyase with an IC ₅₀ value of 210 nM and as an antagonist of the Smoothed (Smo) receptor with an IC ₅₀ of 440 nM. Demonstrating therapeutic potential, this compound, at a dosage of 2 mg/kg per day, effectively mitigates cervical and thoracic lymphocyte infiltration and neuromuscular weakness in rats suffering from experimental autoimmune encephalomyelitis (EAE), a condition triggered by the MOG29-152 peptide from myelin oligodendrocyte glycoprotein. Additionally, it significantly decreases the total lymphocyte count, including reductions in subsets of CD4+ T cells, CD8+ T cells, and B cells. At a higher dosage of 100 mg/kg, S1PL-IN-31 elevates S1P levels within the heart and lymph nodes, while doses of 3 and 10 mg/kg per day notably lower heart rates in female rats, showcasing its multifaceted biological impacts and potential for clinical application.
Targets(IC ₅₀)	Others,LPL Receptor,Smo

Solubility Information

Solubility	Acetonitrile: Soluble DMSO: Soluble (< 1 mg/ml refers to the product slightly soluble or insoluble)
------------	---

Preparing Stock Solutions

	1mg	5mg	10mg
1 mM	2.198 mL	10.9902 mL	21.9804 mL
5 mM	0.4396 mL	2.198 mL	4.3961 mL
10 mM	0.2198 mL	1.099 mL	2.198 mL
50 mM	0.044 mL	0.2198 mL	0.4396 mL

Please select the appropriate solvent to prepare the stock solution, according to the solubility of the product in different solvents. Please use it as soon as possible.

Note: The dilution table applies only to solid products. For liquid products, please calculate the stock solution based on the stated concentration and/or density.

Inhibitor · Natural Compounds · Compound Libraries · Recombinant Proteins

This product is for Research Use Only · Not for Human or Veterinary or Therapeutic Use

Tel:781-999-4286 E_mail:info@targetmol.com Address:34 Washington Street,Wellesley Hills,MA 02481