

(S)-5-hydroxy-6-methoxy Duloxetine maleate

Chemical Properties

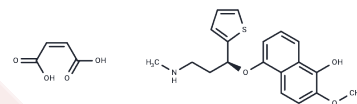
CAS No. :

Formula: C₁₉H₂₁N₃O₃.C₄H₄O₄

Molecular Weight: 459.51

Storage: Powder: -20°C for 3 years | In solvent: -80°C for 1 year

Actual storage temperature shall be subject to the COA.



Biological Description

Description	(S)-5-hydroxy-6-methoxy Duloxetine, an active metabolite of the (S)-duloxetine, functions as a serotonin (5-HT) and norepinephrine reuptake inhibitor. Its formation occurs through the cytochrome P450 (CYP) isoforms CYP1A2 and CYP2D6 via a 5- or 6-hydroxy duloxetine intermediate, followed by a catechol duloxetine intermediate. This compound effectively inhibits the serotonin transporter (SERT), norepinephrine transporter (NET), and dopamine transporter (DAT) across lipid membranes, with inhibition constants (K _i) of 266, 920, and 2,814 nM, respectively, for human transporters.
Targets(IC50)	Others

Solubility Information

Solubility	Methanol: soluble DMF: soluble Ethanol: soluble DMSO: soluble (< 1 mg/ml refers to the product slightly soluble or insoluble)
------------	---

Preparing Stock Solutions

	1mg	5mg	10mg
1 mM	2.1762 mL	10.8812 mL	21.7623 mL
5 mM	0.4352 mL	2.1762 mL	4.3525 mL
10 mM	0.2176 mL	1.0881 mL	2.1762 mL
50 mM	0.0435 mL	0.2176 mL	0.4352 mL

Please select the appropriate solvent to prepare the stock solution, according to the solubility of the product in different solvents. Please use it as soon as possible.

Note: The dilution table applies only to solid products. For liquid products, please calculate the stock solution based on the stated concentration and/or density.

Inhibitor · Natural Compounds · Compound Libraries · Recombinant Proteins

This product is for Research Use Only · Not for Human or Veterinary or Therapeutic Use

Tel:781-999-4286 E_mail:info@targetmol.com Address:34 Washington Street,Wellesley Hills,MA 02481