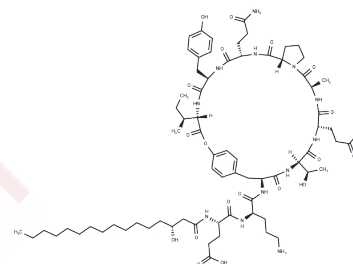


## Plipastatin A1

## Chemical Properties

CAS No. :	103651-09-8
Formula:	C <sub>72</sub> H <sub>110</sub> N <sub>12</sub> O <sub>20</sub>
Molecular Weight:	1463.71
Storage:	Powder: -20°C for 3 years   In solvent: -80°C for 1 year Actual storage temperature shall be subject to the COA.



## Biological Description

Description	Plipastatin A1, a lipopeptide isolated from <i>B. cereus</i> , demonstrates enzyme inhibitory and immunosuppressant properties. It effectively inhibits enzymes phospholipase A2 (PLA2), phospholipase C (PLC), and phospholipase D (PLD) with half-maximal inhibitory concentrations (IC <sub>50</sub> s) of 2.9, 1.3, and 1.4 μM, respectively. Additionally, at a concentration of 100 μg/ml, plipastatin A1 inhibits lipopolysaccharide (LPS)-induced B cell blastogenesis and T cell blastogenesis triggered by concanavalin A. In vivo studies reveal that a dose of 0.1 mg/animal effectively suppresses delayed-type hypersensitivity in mice.
Targets(IC50)	Others,Phospholipase

## Solubility Information

Solubility	Methanol: Soluble Ethanol: Soluble H <sub>2</sub> O: Soluble DMSO: Soluble (< 1 mg/ml refers to the product slightly soluble or insoluble)
------------	--

### Preparing Stock Solutions

---

	<b>1mg</b>	<b>5mg</b>	<b>10mg</b>
1 mM	0.6832 mL	3.416 mL	6.832 mL
5 mM	0.1366 mL	0.6832 mL	1.3664 mL
10 mM	0.0683 mL	0.3416 mL	0.6832 mL
50 mM	0.0137 mL	0.0683 mL	0.1366 mL

---

Please select the appropriate solvent to prepare the stock solution, according to the solubility of the product in different solvents. Please use it as soon as possible.

Note: The dilution table applies only to solid products. For liquid products, please calculate the stock solution based on the stated concentration and/or density.

**Inhibitor · Natural Compounds · Compound Libraries · Recombinant Proteins**

This product is for Research Use Only · Not for Human or Veterinary or Therapeutic Use

Tel:781-999-4286 E\_mail:info@targetmol.com Address:34 Washington Street,Wellesley Hills,MA 02481