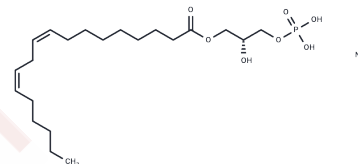


1-Linoleoyl Lysophosphatidic Acid sodium

Chemical Properties

CAS No. :	72777-86-7
Formula:	C ₂₁ H ₃₉ O ₇ P.XNa
Molecular Weight:	434.50
Storage:	Keep away from moisture Powder: -20°C for 3 years In solvent: -80°C for 1 year <small>Actual storage temperature shall be subject to the COA.</small>



Biological Description

Description	1-Linoleoyl lysophosphatidic acid (1-linoleoyl LPA), a glycerophospholipid with linoleic acid at its sn-1 position, acts as an LPA2 receptor agonist and is the predominant LPA form in both mouse and human plasma. This compound preferentially boosts intracellular calcium in Sf9 cells expressing the LPA2 receptor (EC ₅₀ = ~10 nM), compared to those with LPA1 and LPA3 receptors (EC ₅₀ s = ~200 and ~80 nM, respectively). Notably, 1-linoleoyl LPA serum concentrations are elevated in mice with NCTC clone 2472 tumors, while its plasma levels are reduced in primary progressive multiple sclerosis patients—unlike in those with relapsing-remitting multiple sclerosis—and inversely associate with the severity of neurological deficits.
-------------	---

Solubility Information

Solubility	Methanol: Soluble Ethanol: Soluble (< 1 mg/ml refers to the product slightly soluble or insoluble)
------------	---

Preparing Stock Solutions

	1mg	5mg	10mg
1 mM	2.3015 mL	11.5075 mL	23.015 mL
5 mM	0.4603 mL	2.3015 mL	4.603 mL
10 mM	0.2301 mL	1.1507 mL	2.3015 mL
50 mM	0.046 mL	0.2301 mL	0.4603 mL

Please select the appropriate solvent to prepare the stock solution, according to the solubility of the product in different solvents. Please use it as soon as possible.

Note: The dilution table applies only to solid products. For liquid products, please calculate the stock solution based on the stated concentration and/or density.

Inhibitor · Natural Compounds · Compound Libraries · Recombinant Proteins

This product is for Research Use Only · Not for Human or Veterinary or Therapeutic Use

Tel:781-999-4286 E_mail:info@targetmol.com Address:34 Washington Street,Wellesley Hills,MA 02481