

RW2 TFA

## Chemical Properties

CAS No. :

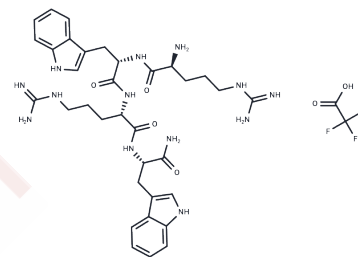
Formula: C34H47N13O4.XCF3COOH

Molecular Weight: 701.80

Keep away from moisture

Storage: Powder: -20°C for 3 years | In solvent: -80°C for 1 year

Actual storage temperature shall be subject to the COA.



## Biological Description

|             |   |
|-------------|---|
| Description | RW2, an antimicrobial peptide, demonstrates activity against E. coli and S. aureus, with IC50 values of 730 µM and 210 µM, respectively. Additionally, it induces hemolysis in isolated ovine erythrocytes. |
|-------------|---|

## Solubility Information

|            |   |
|------------|---|
| Solubility | H2O: soluble<br>(< 1 mg/ml refers to the product slightly soluble or insoluble) |
|------------|---|

## Preparing Stock Solutions

|       | 1mg       | 5mg       | 10mg       |
|-------|-----------|-----------|------------|
| 1 mM  | 1.4249 mL | 7.1245 mL | 14.2491 mL |
| 5 mM  | 0.285 mL  | 1.4249 mL | 2.8498 mL  |
| 10 mM | 0.1425 mL | 0.7125 mL | 1.4249 mL  |
| 50 mM | 0.0285 mL | 0.1425 mL | 0.285 mL   |

Please select the appropriate solvent to prepare the stock solution, according to the solubility of the product in different solvents. Please use it as soon as possible.

Note: The dilution table applies only to solid products. For liquid products, please calculate the stock solution based on the stated concentration and/or density.

Inhibitor · Natural Compounds · Compound Libraries · Recombinant Proteins

This product is for Research Use Only · Not for Human or Veterinary or Therapeutic Use

Tel:781-999-4286 E\_mail:info@targetmol.com Address:34 Washington Street,Wellesley Hills,MA 02481