

## 5-FAM-LPETGG TFA

### Chemical Properties

CAS No. :

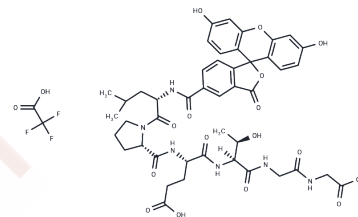
Formula: C45H50N6O16.XCF3COOH

Molecular Weight: 930.90

Keep away from direct sunlight

Storage: Powder: -20°C for 3 years | In solvent: -80°C for 1 year

Actual storage temperature shall be subject to the COA.



### Biological Description

Description	5-FAM-LPETGG is a fluorescent peptide that combines the sortase recognition sequence LPETGG with the fluorescent label 5-carboxyfluorescein (5-FAM), characterized by excitation/emission maxima at 492/518 nm. It serves for site-specific labeling of target proteins through sortase-catalyzed transpeptidation.
Targets(IC50)	Others

### Solubility Information

Solubility	DMSO: 10 mg/mL (10.74 mM),Sonication is recommended. PBS pH 7.2: 5 mg/mL (5.37 mM),Sonication is recommended. DMF: 10 mg/mL (10.74 mM),Sonication is recommended. Ethanol: 10 mg/mL (10.74 mM),Sonication is recommended. ( < 1 mg/ml refers to the product slightly soluble or insoluble)
------------	--

### Preparing Stock Solutions

	1mg	5mg	10mg
1 mM	1.0742 mL	5.3711 mL	10.7423 mL
5 mM	0.2148 mL	1.0742 mL	2.1485 mL
10 mM	0.1074 mL	0.5371 mL	1.0742 mL
50 mM	0.0215 mL	0.1074 mL	0.2148 mL

Please select the appropriate solvent to prepare the stock solution, according to the solubility of the product in different solvents. Please use it as soon as possible.

Note: The dilution table applies only to solid products. For liquid products, please calculate the stock solution based on the stated concentration and/or density.

**Inhibitor · Natural Compounds · Compound Libraries · Recombinant Proteins**

This product is for Research Use Only · Not for Human or Veterinary or Therapeutic Use

Tel:781-999-4286 E\_mail:info@targetmol.com Address:34 Washington Street,Wellesley Hills,MA 02481