

## Abl Substrate Peptide TFA

## Chemical Properties

CAS No. :

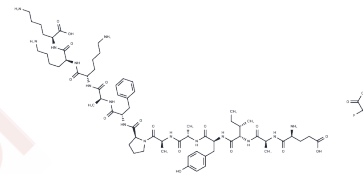
Formula: C64H101N15O16.XCF3COOH

Molecular Weight: 1336.58

Keep away from direct sunlight

Storage: Powder: -20°C for 3 years | In solvent: -80°C for 1 year

Actual storage temperature shall be subject to the COA.



## Biological Description

Description	Abl substrate peptide, a peptide substrate specifically phosphorylated by the tyrosine kinase Abl rather than c-Src kinase at 20 $\mu$ M, serves to quantify Abl kinase activity in vitro. This selective phosphorylation underscores its utility for measuring Abl's enzymatic function.
Targets(IC50)	Others

## Solubility Information

Solubility	PBS pH 7.2: 10 mg/mL (7.48 mM), Sonication is recommended. DMF: 1 mg/mL (0.75 mM), Sonication is recommended. DMSO: 25 mg/mL (18.7 mM), Sonication is recommended. ( $< 1$ mg/ml refers to the product slightly soluble or insoluble)
------------	--

## Preparing Stock Solutions

	1mg	5mg	10mg
1 mM	0.7482 mL	3.7409 mL	7.4818 mL
5 mM	0.1496 mL	0.7482 mL	1.4964 mL
10 mM	0.0748 mL	0.3741 mL	0.7482 mL
50 mM	0.015 mL	0.0748 mL	0.1496 mL

Please select the appropriate solvent to prepare the stock solution, according to the solubility of the product in different solvents. Please use it as soon as possible.

Note: The dilution table applies only to solid products. For liquid products, please calculate the stock solution based on the stated concentration and/or density.

**Inhibitor · Natural Compounds · Compound Libraries · Recombinant Proteins**

This product is for Research Use Only · Not for Human or Veterinary or Therapeutic Use

Tel:781-999-4286 E\_mail:info@targetmol.com Address:34 Washington Street,Wellesley Hills,MA 02481