

EGFR Peptide (human, mouse) TFA

Chemical Properties

CAS No. :

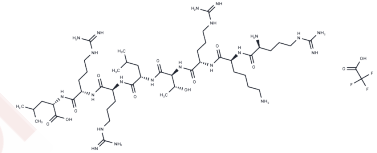
Formula: C46H91N21O10.XCF3COOH

Molecular Weight: 1098.35

Keep away from direct sunlight

Storage: Powder: -20°C for 3 years | In solvent: -80°C for 1 year

Actual storage temperature shall be subject to the COA.



Biological Description

Description	EGFR peptide, a PKC peptide substrate, mirrors an amino acid sequence from EGFR's intracellular region and serves to gauge PKC activity in primary bovine retinal endothelial cells. At a concentration of 50 μ M, unlike its myristoylated counterpart, EGFR peptide does not inhibit PKC activity.
-------------	--

Solubility Information

Solubility	PBS pH 7.2: 10 mg/mL (9.1 mM), Sonication is recommended. (< 1 mg/ml refers to the product slightly soluble or insoluble)
------------	---

Preparing Stock Solutions

	1mg	5mg	10mg
1 mM	0.9105 mL	4.5523 mL	9.1046 mL
5 mM	0.1821 mL	0.9105 mL	1.8209 mL
10 mM	0.091 mL	0.4552 mL	0.9105 mL
50 mM	0.0182 mL	0.091 mL	0.1821 mL

Please select the appropriate solvent to prepare the stock solution, according to the solubility of the product in different solvents. Please use it as soon as possible.

Note: The dilution table applies only to solid products. For liquid products, please calculate the stock solution based on the stated concentration and/or density.

Inhibitor · Natural Compounds · Compound Libraries · Recombinant Proteins

This product is for Research Use Only · Not for Human or Veterinary or Therapeutic Use

Tel: 781-999-4286 E_mail: info@targetmol.com Address: 34 Washington Street, Wellesley Hills, MA 02481