

## Kisspeptin-10 (zebrafish) TFA

## Chemical Properties

CAS No. :

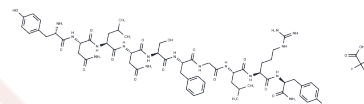
Formula: C58H84N16O15.XCF3COOH

Molecular Weight: 1245.39

Keep away from moisture

Storage: Powder: -20°C for 3 years | In solvent: -80°C for 1 year

Actual storage temperature shall be subject to the COA.



## Biological Description

Description	Kisspeptin-10, a neuropeptide present in the brains, ovaries, and testes of zebrafish, plays a critical role in gonadal development and steroid expression. At a concentration of 10 ng/ml, it enhances the mRNA levels for the luteinizing hormone (Lh) receptor and both progesterin receptor a (Pra) and Prb in zebrafish ovarian follicles. In female goldfish, doses of 0.1 and 1 µg/g of Kisspeptin-10 elevate serum levels of luteinizing hormone, with no similar effect observed in male goldfish.
-------------	---

## Solubility Information

Solubility	DMSO: 20 mg/mL (16.06 mM), Sonication is recommended. DMF: 10 mg/mL (8.03 mM), Sonication is recommended. (< 1 mg/ml refers to the product slightly soluble or insoluble)
------------	---

## Preparing Stock Solutions

	1mg	5mg	10mg
1 mM	0.803 mL	4.0148 mL	8.0296 mL
5 mM	0.1606 mL	0.803 mL	1.6059 mL
10 mM	0.0803 mL	0.4015 mL	0.803 mL
50 mM	0.0161 mL	0.0803 mL	0.1606 mL

Please select the appropriate solvent to prepare the stock solution, according to the solubility of the product in different solvents. Please use it as soon as possible.

Note: The dilution table applies only to solid products. For liquid products, please calculate the stock solution based on the stated concentration and/or density.

Inhibitor · Natural Compounds · Compound Libraries · Recombinant Proteins

This product is for Research Use Only · Not for Human or Veterinary or Therapeutic Use

Tel: 781-999-4286 E\_mail: info@targetmol.com Address: 34 Washington Street, Wellesley Hills, MA 02481