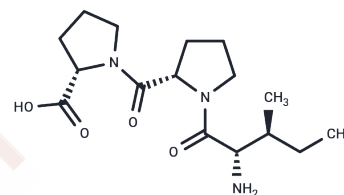


H-Ile-Pro-Pro-OH

Chemical Properties

CAS No. :	26001-32-1
Formula:	C ₁₆ H ₂₇ N ₃ O ₄
Molecular Weight:	325.4
Storage:	Keep away from moisture Powder: -20°C for 3 years In solvent: -80°C for 1 year <small>Actual storage temperature shall be subject to the COA.</small>



Biological Description

Description	H-Ile-Pro-Pro-OH, a milk-derived peptide, inhibits angiotensin-converting enzyme (ACE) [1] with an IC ₅₀ of 5 μM.
Targets(IC ₅₀)	Angiotensin-converting Enzyme (ACE)

Preparing Stock Solutions

	1mg	5mg	10mg
1 mM	3.0731 mL	15.3657 mL	30.7314 mL
5 mM	0.6146 mL	3.0731 mL	6.1463 mL
10 mM	0.3073 mL	1.5366 mL	3.0731 mL
50 mM	0.0615 mL	0.3073 mL	0.6146 mL

Please select the appropriate solvent to prepare the stock solution, according to the solubility of the product in different solvents. Please use it as soon as possible.

Note: The dilution table applies only to solid products. For liquid products, please calculate the stock solution based on the stated concentration and/or density.

Reference

Nonaka A, et al. The milk-derived peptides Val-Pro-Pro and Ile-Pro-Pro attenuate arterial dysfunction in L-NAME-treated rats. *Hypertens Res.* 2014 Aug;37(8):703-7.

Inhibitor · Natural Compounds · Compound Libraries · Recombinant Proteins

This product is for Research Use Only · Not for Human or Veterinary or Therapeutic Use

Tel: 781-999-4286 E_mail: info@targetmol.com Address: 34 Washington Street, Wellesley Hills, MA 02481