

GLF16 HCl

Chemical Properties

CAS No. :

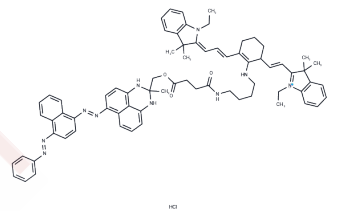
Formula: C72H80Cl2N10O3

Molecular Weight: 1204.39

Storage: Store at low temperature, Keep away from direct sunlight

Powder: -20°C for 3 years | In solvent: -80°C for 1 year

Actual storage temperature shall be subject to the COA.



Biological Description

Description	GLF16 HCl is a fluorophore-coupled Sudan Black B analog that allows rapid detection, isolation and real-time tracking of senescent cells by fluorescence microscopy and flow cytometry.
Targets(IC50)	Others

Preparing Stock Solutions

	1mg	5mg	10mg
1 mM	0.8303 mL	4.1515 mL	8.303 mL
5 mM	0.1661 mL	0.8303 mL	1.6606 mL
10 mM	0.083 mL	0.4151 mL	0.8303 mL
50 mM	0.0166 mL	0.083 mL	0.1661 mL

Please select the appropriate solvent to prepare the stock solution, according to the solubility of the product in different solvents. Please use it as soon as possible.

Note: The dilution table applies only to solid products. For liquid products, please calculate the stock solution based on the stated concentration and/or density.

Reference

Magkouta S, et al. One-step rapid tracking and isolation of senescent cells in cellular systems, tissues, or animal models via GLF16. STAR Protoc. 2024 Mar 7;5(1):102929.

Inhibitor · Natural Compounds · Compound Libraries · Recombinant Proteins

This product is for Research Use Only · Not for Human or Veterinary or Therapeutic Use

Tel: 781-999-4286 E_mail: info@targetmol.com Address: 34 Washington Street, Wellesley Hills, MA 02481