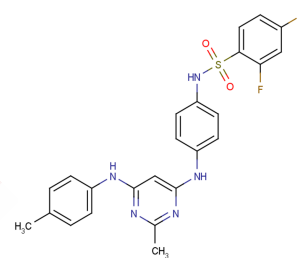


SQLE-IN-1

Chemical Properties

CAS No. :	1019169-83-5
Formula:	C ₂₄ H ₂₁ F ₂ N ₅ O ₂ S
Molecular Weight:	481.52
Storage:	Store at low temperature Powder: -20°C for 3 years In solvent: -80°C for 1 year <small>Actual storage temperature shall be subject to the COA.</small>



Biological Description

Description	SQLE-IN-1 is a squalene epoxidase (SQLE) inhibitor with anti-tumor activity. It can inhibit the proliferation and migration of liver cancer cell line Huh7, inhibit the production of cellular cholesterol, and increase the expression of the tumor suppressor gene PTEN. expression, inhibiting the protein expression of PI3K and AKT.
Targets(IC50)	PTEN,Akt,Antifungal,PI3K

Preparing Stock Solutions

	1mg	5mg	10mg
1 mM	2.0768 mL	10.3838 mL	20.7676 mL
5 mM	0.4154 mL	2.0768 mL	4.1535 mL
10 mM	0.2077 mL	1.0384 mL	2.0768 mL
50 mM	0.0415 mL	0.2077 mL	0.4154 mL

Please select the appropriate solvent to prepare the stock solution, according to the solubility of the product in different solvents. Please use it as soon as possible.

Note: The dilution table applies only to solid products. For liquid products, please calculate the stock solution based on the stated concentration and/or density.

Reference

Liu, Yayun, et al. Novel squalene epoxidase inhibitor and application thereof in preparation of anti-liver cancer drugs. China, CN116987037. 2023-11-03.

Inhibitor · Natural Compounds · Compound Libraries · Recombinant Proteins

This product is for Research Use Only. Not for Human or Veterinary or Therapeutic Use

Tel:781-999-4286 E_mail:info@targetmol.com Address:34 Washington Street,Wellesley Hills,MA 02481