

## Romergoline 2HCl

## Chemical Properties

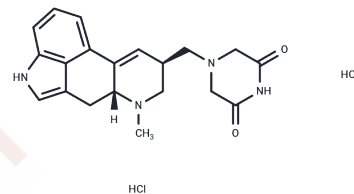
CAS No. :

Formula: C<sub>20</sub>H<sub>24</sub>Cl<sub>2</sub>N<sub>4</sub>O<sub>2</sub>

Molecular Weight: 423.34

Storage: Powder: -20°C for 3 years | In solvent: -80°C for 1 year

Actual storage temperature shall be subject to the COA.



## Biological Description

Description	Romergoline 2HCl is a D1 agonist and D2 antagonist used in the study of Parkinson's disease.
Targets(IC50)	Dopamine Receptor

## Preparing Stock Solutions

	1mg	5mg	10mg
1 mM	2.3622 mL	11.8108 mL	23.6217 mL
5 mM	0.4724 mL	2.3622 mL	4.7243 mL
10 mM	0.2362 mL	1.1811 mL	2.3622 mL
50 mM	0.0472 mL	0.2362 mL	0.4724 mL

Please select the appropriate solvent to prepare the stock solution, according to the solubility of the product in different solvents. Please use it as soon as possible.

Note: The dilution table applies only to solid products. For liquid products, please calculate the stock solution based on the stated concentration and/or density.

## Reference

Metman LV, et al. Effect of the putative dopamine D1 agonist and D2 antagonist FCE 23884 on Parkinson's disease. *Mov Disord.* 1996 May;11(3):257-60.

Inhibitor · Natural Compounds · Compound Libraries · Recombinant Proteins

This product is for Research Use Only · Not for Human or Veterinary or Therapeutic Use

Tel:781-999-4286 E\_mail:info@targetmol.com Address:34 Washington Street,Wellesley Hills,MA 02481