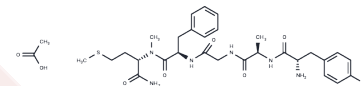


Metkephamid acetate

Chemical Properties

CAS No. :	66960-35-8
Formula:	C31H44N6O8S
Molecular Weight:	660.78
Storage:	Powder: -20°C for 3 years In solvent: -80°C for 1 year Actual storage temperature shall be subject to the COA.



Biological Description

Description	Metkephamid acetate is a synthetic opioid pentapeptide and derivative of [Met] enkephalin. It shows as a potent agonist of the δ - and μ -opioid receptors with roughly equipotent affinity, and also has similarly high affinity as well as subtype-selectivity for the κ 3-opioid receptor.
Targets(IC50)	Others

Preparing Stock Solutions

	1mg	5mg	10mg
1 mM	1.5134 mL	7.5668 mL	15.1336 mL
5 mM	0.3027 mL	1.5134 mL	3.0267 mL
10 mM	0.1513 mL	0.7567 mL	1.5134 mL
50 mM	0.0303 mL	0.1513 mL	0.3027 mL

Please select the appropriate solvent to prepare the stock solution, according to the solubility of the product in different solvents. Please use it as soon as possible.

Note: The dilution table applies only to solid products. For liquid products, please calculate the stock solution based on the stated concentration and/or density.

Reference

- Burkhardt C, Frederickson RC, Pasternak GW. Metkephamid (Tyr-D-ala-Gly-Phe-N(Me)Met-NH₂), a potent opioid peptide: receptor binding and analgesic properties. *Peptides*. 1982 Sep-Oct;3(5):869-71. PubMed PMID: 6294639.
- Bloomfield SS, Barden TP, Mitchell J. Metkephamid and meperidine analgesia after episiotomy. *Clin Pharmacol Ther*. 1983 Aug;34(2):240-7. PubMed PMID: 6872419.
- Leander JD, Wood CR. Metkephamid effects on operant behavior. *Peptides*. 1982 Sep-Oct;3(5):771-3. PubMed PMID: 7177922.
- Pasanisi F, Sloan L, Rubin PC. Cardiovascular properties of metkephamid, a delta opioid receptor agonist, in man. *Clin Sci (Lond)*. 1985 Feb;68(2):209-13. PubMed PMID: 2981652.

Inhibitor · Natural Compounds · Compound Libraries · Recombinant Proteins

This product is for Research Use Only · Not for Human or Veterinary or Therapeutic Use

Tel:781-999-4286 E_mail:info@targetmol.com Address:34 Washington Street,Wellesley Hills,MA 02481