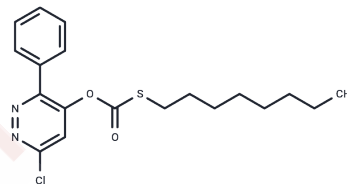


Pyridate

Chemical Properties

CAS No. : 55512-33-9
 Formula: C₁₉H₂₃ClN₂O₂S
 Molecular Weight: 378.92
 Storage: Powder: -20°C for 3 years | In solvent: -80°C for 1 year
 Actual storage temperature shall be subject to the COA.



Biological Description

Description	Pyridate is mainly used as a selective post seedling herbicide.
Targets(IC50)	Others

Solubility Information

Solubility	DMSO: Soluble, (< 1 mg/ml refers to the product slightly soluble or insoluble)
------------	---

Preparing Stock Solutions

	1mg	5mg	10mg
1 mM	2.6391 mL	13.1954 mL	26.3908 mL
5 mM	0.5278 mL	2.6391 mL	5.2782 mL
10 mM	0.2639 mL	1.3195 mL	2.6391 mL
50 mM	0.0528 mL	0.2639 mL	0.5278 mL

Please select the appropriate solvent to prepare the stock solution, according to the solubility of the product in different solvents. Please use it as soon as possible.

Note: The dilution table applies only to solid products. For liquid products, please calculate the stock solution based on the stated concentration and/or density.

Reference

Burghardt M, Friedmann A, Schreiber L, Riederer M. Comparison of sorption and diffusion by pyridate and its polar metabolite in isolated cuticular wax of *Chenopodium album* and *Hordeum vulgare*. *J Agric Food Chem*. 2005 Sep 7; 53(18):7150-5. PubMed PMID: 16131123.

Pachinger A, Eisner E, Begutter H, Klus H. Determination of a metabolite of the herbicide pyridate in drinking and groundwater using high-performance liquid chromatography with amperometric detection. *J Chromatogr*. 1991 Oct 11;558(2):369-73. PubMed PMID: 1797812.

Lindner W, Ruckendorfer H. HPLC--residue analysis of the herbicide pyridate in cereals. *Int J Environ Anal Chem*. 1983;16(3):205-18. PubMed PMID: 6679538.

Oliveira FA, Reis LP, Soto-Blanco B, Melo MM. Pesticides residues in the *Prochilodus costatus* (Valenciennes, 1850) fish caught in the São Francisco River, Brazil. *J Environ Sci Health B*. 2015;50(6):398-405. doi: 10.1080/03601234.2015.1011946. PubMed PMID: 25844860.

Inhibitor · Natural Compounds · Compound Libraries · Recombinant Proteins

This product is for Research Use Only · Not for Human or Veterinary or Therapeutic Use

Tel:781-999-4286 E_mail:info@targetmol.com Address:34 Washington Street,Wellesley Hills,MA 02481