

EL-102

Chemical Properties

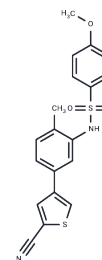
CAS No. : 1233948-61-2

Formula: C₁₉H₁₆N₂O₃S₂

Molecular Weight: 384.47

Storage: Powder: -20°C for 3 years | In solvent: -80°C for 1 year

Actual storage temperature shall be subject to the COA.



Biological Description

Description	EL-102 is a HIF1 α inhibitor with anticancer activity that inhibits microtubule protein polymerization and can be used to study prostate cancer.
Targets(IC50)	Apoptosis,HIF/HIF Prolyl-Hydroxylase,Microtubule Associated,HIF
In vitro	In CWR22, 22Rv1, DU145, PC-3, DLKP, and doxorubicin-selected variant DLKPA cell lines, EL-102 (0-120 nM; 72 hours) inhibited cell proliferation with IC50 values of 24, 21.7, 40.3, 37.0, 14.4, and 16.3 nM, respectively[1].
In vivo	In nude mice bearing CWR22 xenografts, EL-102 (oral gavage; 12 and 15 mg/kg; administered every 5 days with 2 days off) showed no effect on tumor growth but enhanced the effect of docetaxel on the tumor[1].

Solubility Information

Solubility	DMSO: 20 mg/mL (52.02 mM),Sonication is recommended. (< 1 mg/ml refers to the product slightly soluble or insoluble)
------------	---

Preparing Stock Solutions

	1mg	5mg	10mg
1 mM	2.601 mL	13.0049 mL	26.0098 mL
5 mM	0.5202 mL	2.601 mL	5.202 mL
10 mM	0.2601 mL	1.3005 mL	2.601 mL
50 mM	0.052 mL	0.2601 mL	0.5202 mL

Please select the appropriate solvent to prepare the stock solution, according to the solubility of the product in different solvents. Please use it as soon as possible.

Note: The dilution table applies only to solid products. For liquid products, please calculate the stock solution based on the stated concentration and/or density.

Reference

A P Toner et al. The novel toluidine sulphonamide EL102 shows pre-clinical in vitro and in vivo activity against prostate cancer and circumvents MDR1 resistance. Br J Cancer, 2013 Oct 15, 109(8): 2131-2141.

Inhibitor · Natural Compounds · Compound Libraries · Recombinant Proteins

This product is for Research Use Only · Not for Human or Veterinary or Therapeutic Use

Tel: 781-999-4286 E_mail: info@targetmol.com Address: 34 Washington Street, Wellesley Hills, MA 02481