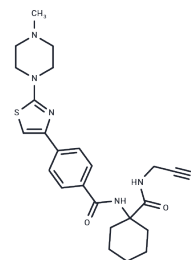


L-006235

Chemical Properties

CAS No. : 294623-49-7
 Formula: C₂₄H₃₀N₆O₂S
 Molecular Weight: 466.6
 Storage: Powder: -20°C for 3 years | In solvent: -80°C for 1 year
 Actual storage temperature shall be subject to the COA.



Biological Description

Description	L-006235 is a potent and reversible inhibitor of cathepsin K with IC ₅₀ of 0.25 nM.
Targets(IC ₅₀)	Cysteine Protease

Solubility Information

Solubility	DMSO: 50 mg/mL (107.16 mM), Sonication is recommended. (< 1 mg/ml refers to the product slightly soluble or insoluble)
In vivo Formulation	10% DMSO+40% PEG300+5% Tween 80+45% Saline: 2 mg/mL (4.29 mM), Sonication is recommended. <i>Please add the solvents sequentially, clarifying the solution as much as possible before adding the next one. Dissolve by heating and/or sonication if necessary. Working solution is recommended to be prepared and used immediately. The formulation provided above is for reference purposes only. In vivo formulations may vary and should be modified based on specific experimental conditions.</i>

Preparing Stock Solutions

	1mg	5mg	10mg
1 mM	2.1432 mL	10.7158 mL	21.4316 mL
5 mM	0.4286 mL	2.1432 mL	4.2863 mL
10 mM	0.2143 mL	1.0716 mL	2.1432 mL
50 mM	0.0429 mL	0.2143 mL	0.4286 mL

Please select the appropriate solvent to prepare the stock solution, according to the solubility of the product in different solvents. Please use it as soon as possible.

Note: The dilution table applies only to solid products. For liquid products, please calculate the stock solution based on the stated concentration and/or density.

Reference

Lena Svelande , Helena Erlandsson-Harris, Leif Astner, et al. Inhibition of cathepsin K reduces bone erosion, cartilage degradation and inflammation evoked by collagen-induced arthritis in mice. Eur J Pharmacol. 2009 Jun 24;613(1-3):155-62.

Inhibitor · Natural Compounds · Compound Libraries · Recombinant Proteins

This product is for Research Use Only · Not for Human or Veterinary or Therapeutic Use

Tel: 781-999-4286 E_mail: info@targetmol.com Address: 34 Washington Street, Wellesley Hills, MA 02481