

## Isoproterenol sulfate anhydrous

### Chemical Properties

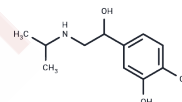
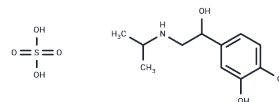
CAS No. : 299-95-6

Formula: C<sub>22</sub>H<sub>36</sub>N<sub>2</sub>O<sub>10</sub>S

Molecular Weight: 520.59

Storage: Powder: -20°C for 3 years | In solvent: -80°C for 1 year

Actual storage temperature shall be subject to the COA.



### Biological Description

Description	Isoproterenol sulfate anhydrous is a useful alkaloid. It is used for biological research.
Targets(IC50)	Others,Endogenous Metabolite,Adrenergic Receptor

### Solubility Information

Solubility	DMSO: Soluble, (< 1 mg/ml refers to the product slightly soluble or insoluble)
------------	---

### Preparing Stock Solutions

	1mg	5mg	10mg
1 mM	1.9209 mL	9.6045 mL	19.209 mL
5 mM	0.3842 mL	1.9209 mL	3.8418 mL
10 mM	0.1921 mL	0.9604 mL	1.9209 mL
50 mM	0.0384 mL	0.1921 mL	0.3842 mL

Please select the appropriate solvent to prepare the stock solution, according to the solubility of the product in different solvents. Please use it as soon as possible.

Note: The dilution table applies only to solid products. For liquid products, please calculate the stock solution based on the stated concentration and/or density.

### Reference

Ziaee M, Khorrami A, Ebrahimi M, Nourafcan H, Amiraslanzadeh M, Rameshrad M, Garjani M, Garjani A. Cardioprotective Effects of Essential Oil of Lavandula angustifolia on Isoproterenol-induced Acute Myocardial Infarction in Rat. Iran J Pharm Res. 2015 Winter;14(1):279-89. PubMed PMID: 25561934; PubMed Central PMCID: PMC4277641.

**Inhibitor · Natural Compounds · Compound Libraries · Recombinant Proteins**

This product is for Research Use Only · Not for Human or Veterinary or Therapeutic Use

Tel:781-999-4286 E\_mail:info@targetmol.com Address:34 Washington Street,Wellesley Hills,MA 02481