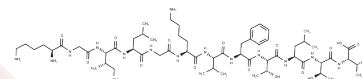


## A2-Binding peptide

## Chemical Properties

|                   |   |
|-------------------|---|
| CAS No. :         | 119425-35-3   |
| Formula:          | C <sub>61</sub> H <sub>106</sub> N <sub>14</sub> O <sub>15</sub>  |
| Molecular Weight: | 1275.602  |
| Storage:          | Keep away from moisture<br>Powder: -20°C for 3 years   In solvent: -80°C for 1 year<br><small>Actual storage temperature shall be subject to the COA.</small> |



## Biological Description

|             |   |
|-------------|---|
| Description | A2-Binding peptide has involved in the assembly of MHC Class I molecules. |
|-------------|---|

## Preparing Stock Solutions

|       | 1mg       | 5mg       | 10mg      |
|-------|-----------|-----------|-----------|
| 1 mM  | 0.7839 mL | 3.9197 mL | 7.8394 mL |
| 5 mM  | 0.1568 mL | 0.7839 mL | 1.5679 mL |
| 10 mM | 0.0784 mL | 0.392 mL  | 0.7839 mL |
| 50 mM | 0.0157 mL | 0.0784 mL | 0.1568 mL |

Please select the appropriate solvent to prepare the stock solution, according to the solubility of the product in different solvents. Please use it as soon as possible.

Note: The dilution table applies only to solid products. For liquid products, please calculate the stock solution based on the stated concentration and/or density.

## Reference

- Wang P, Vánky F, Végh Z, Persson U, Hising C, Klein E. Assembly of MHC class I molecules in ex vivo carcinoma cells induced by IFN-gamma or by a binding peptide. *Cell Immunol.* 1992 Jul;142(2):296-302. PubMed PMID: 1623553.
- Kanaoka S, Yamasaki S, Okino T, Inoue N, Shimada Y, Kaneko M, Otaka A, Fujii N, Imamura M. Induction of human leukocyte antigen (HLA)-A2-restricted and MAGE-3-gene-derived peptide-specific cytolytic T lymphocytes using cultured dendritic cells from an HLA-A2 esophageal cancer patient. *J Surg Oncol.* 1999 May;71(1):16-21. PubMed PMID: 10362086.
- Tung CW, Ziehm M, Kämper A, Kohlbacher O, Ho SY. POPIK: T-cell reactivity prediction using support vector machines and string kernels. *BMC Bioinformatics.* 2011 Nov 15;12:446. doi: 10.1186/1471-2105-12-446. PubMed PMID: 22085524; PubMed Central PMCID: PMC3228774.
- Schuler-Thurner B, Dieckmann D, Keikavoussi P, Bender A, Maczek C, Jonuleit H, Röder C, Haendle I, Leisgang W, Dunbar R, Cerundolo V, von Den Driesch P, Knop J, Bröcker EB, Enk A, Kämpgen E, Schuler G. Mage-3 and influenza-matrix peptide-specific cytotoxic T cells are inducible in terminal stage HLA-A2.1+ melanoma patients by mature monocyte-derived dendritic cells. *J Immunol.* 2000 Sep 15;165(6):3492-6. PubMed PMID: 10975870.

**Inhibitor · Natural Compounds · Compound Libraries · Recombinant Proteins**

This product is for Research Use Only · Not for Human or Veterinary or Therapeutic Use

Tel:781-999-4286 E\_mail:info@targetmol.com Address:34 Washington Street,Wellesley Hills,MA 02481