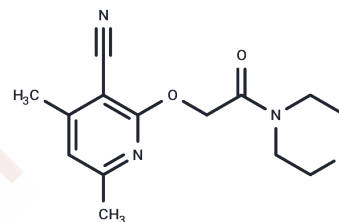


Pim-1 kinase inhibitor 8

Chemical Properties

| | |
|-------------------|--|
| CAS No. : | 916038-47-6 |
| Formula: | C ₁₄ H ₁₇ N ₃ O ₃ |
| Molecular Weight: | 275.3 |
| Storage: | Store at low temperature Powder: -20°C for 3 years In solvent: -80°C for 1 year <small>Actual storage temperature shall be subject to the COA.</small> |



Biological Description

| | |
|---------------|--|
| Description | Pim-1 kinase inhibitor 8 is a potent Pim-1 kinase inhibitor with anticancer activity and can effectively inhibit cell migration. Pim-1 kinase inhibitor 8 is cytotoxic to MCF-7 and HepG2 cells, and is a candidate compound for breast cancer research. |
| Targets(IC50) | Pim,PKC |

Solubility Information

| | |
|------------|---|
| Solubility | DMSO: 80 mg/mL (290.59 mM), Sonication is recommended. (< 1 mg/ml refers to the product slightly soluble or insoluble) |
|------------|---|

Preparing Stock Solutions

| | 1mg | 5mg | 10mg |
|-------|-----------|-----------|-----------|
| 1 mM | 3.6324 mL | 18.162 mL | 36.324 mL |
| 5 mM | 0.7265 mL | 3.6324 mL | 7.2648 mL |
| 10 mM | 0.3632 mL | 1.8162 mL | 3.6324 mL |
| 50 mM | 0.0726 mL | 0.3632 mL | 0.7265 mL |

Please select the appropriate solvent to prepare the stock solution, according to the solubility of the product in different solvents. Please use it as soon as possible.

Note: The dilution table applies only to solid products. For liquid products, please calculate the stock solution based on the stated concentration and/or density.

Reference

Shaban SM, et al. Design and Synthesis of Novel Pyridine-Based Compounds as Potential PIM-1 Kinase Inhibitors, Apoptosis, and Autophagy Inducers Targeting MCF-7 Cell Lines: In Vitro and In Vivo Studies. ACS Omega. 2023 Nov 27;8(49):46922-46933.

Inhibitor · Natural Compounds · Compound Libraries · Recombinant Proteins

This product is for Research Use Only · Not for Human or Veterinary or Therapeutic Use

Tel:781-999-4286 E_mail:info@targetmol.com Address:34 Washington Street,Wellesley Hills,MA 02481