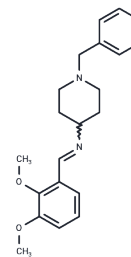


SEW06622

Chemical Properties

CAS No. : 261349-28-4
 Formula: C₂₁H₂₆N₂O₂
 Molecular Weight: 338.44
 Storage: Powder: -20°C for 3 years | In solvent: -80°C for 1 year
 Actual storage temperature shall be subject to the COA.



Biological Description

Description	SEW06622 is a potent inhibitor of acetylcholinesterase (AChE) and beta-secretase-1 (BACE-1) and is a potential candidate for the treatment of Alzheimer's disease.
Targets(IC50)	Beta-Secretase,BACE,Cholinesterase (ChE)

Solubility Information

Solubility	DMSO: 3.39 mg/mL (10.02 mM),Sonication is recommended. (< 1 mg/ml refers to the product slightly soluble or insoluble)
------------	---

Preparing Stock Solutions

	1mg	5mg	10mg
1 mM	2.9547 mL	14.7737 mL	29.5473 mL
5 mM	0.5909 mL	2.9547 mL	5.9095 mL
10 mM	0.2955 mL	1.4774 mL	2.9547 mL
50 mM	0.0591 mL	0.2955 mL	0.5909 mL

Please select the appropriate solvent to prepare the stock solution, according to the solubility of the product in different solvents. Please use it as soon as possible.

Note: The dilution table applies only to solid products. For liquid products, please calculate the stock solution based on the stated concentration and/or density.

Reference

Voter AF, et al. A High-Throughput Screening Strategy to Identify Protein-Protein Interaction Inhibitors That Block the Fanconi Anemia DNA Repair Pathway. J Biomol Screen. 2016 Jul;21(6):626-33.

Sharma P,et al. Design and development of multitarget-directed N-Benzylpiperidine analogs as potential candidates for the treatment of Alzheimer's disease. Eur J Med Chem. 2019 Apr 1;167:510-524.

Inhibitor · Natural Compounds · Compound Libraries · Recombinant Proteins

This product is for Research Use Only · Not for Human or Veterinary or Therapeutic Use

Tel:781-999-4286 E_mail:info@targetmol.com Address:34 Washington Street,Wellesley Hills,MA 02481