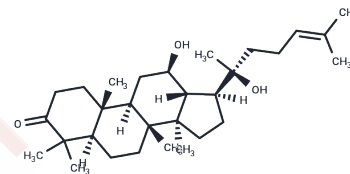


(20S)-Protopanaxadiol-3-one

Chemical Properties

CAS No. : 51116-90-6
 Formula: C₃₀H₅₀O₃
 Molecular Weight: 458.72
 Storage: Powder: -20°C for 3 years | In solvent: -80°C for 1 year
 Actual storage temperature shall be subject to the COA.



Biological Description

| | |
|-------------|---|
| Description | (20S)-Protopanaxadiol-3-one is a natural compound isolated from <i>Melia azedarach</i> and <i>Betula pendula</i> [1]. |
|-------------|---|

Preparing Stock Solutions

| | 1mg | 5mg | 10mg |
|-------|-----------|------------|------------|
| 1 mM | 2.180 mL | 10.8999 mL | 21.7998 mL |
| 5 mM | 0.436 mL | 2.180 mL | 4.360 mL |
| 10 mM | 0.218 mL | 1.090 mL | 2.180 mL |
| 50 mM | 0.0436 mL | 0.218 mL | 0.436 mL |

Please select the appropriate solvent to prepare the stock solution, according to the solubility of the product in different solvents. Please use it as soon as possible.

Note: The dilution table applies only to solid products. For liquid products, please calculate the stock solution based on the stated concentration and/or density.

Inhibitor · Natural Compounds · Compound Libraries · Recombinant Proteins

This product is for Research Use Only · Not for Human or Veterinary or Therapeutic Use

Tel:781-999-4286 E_mail:info@targetmol.com Address:34 Washington Street,Wellesley Hills,MA 02481