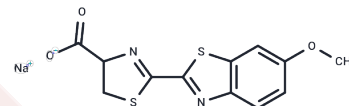


(Rac)-Luciferin 6'-methyl ether sodium

Chemical Properties

CAS No. :	646450-23-9
Formula:	C ₁₂ H ₉ N ₂ NaO ₃ S ₂
Molecular Weight:	316.33
Storage:	Powder: -20°C for 3 years In solvent: -80°C for 1 year Actual storage temperature shall be subject to the COA.



Biological Description

Description	D-Luciferin 6'-methyl ether (6'-Methoxyluciferin; compound 19a) sodium serves as a potent inhibitor of the North American firefly <i>Photinus pyralis</i> (PpyLuc) luciferase, exhibiting an IC ₅₀ of 0.1 μM. As an analog of D-luciferin, this compound demonstrates non-specific interactions at the ATP- and luciferin-binding sites within the active site of PpyLuc [1].
Targets(IC50)	Others

Preparing Stock Solutions

	1mg	5mg	10mg
1 mM	3.1613 mL	15.8063 mL	31.6126 mL
5 mM	0.6323 mL	3.1613 mL	6.3225 mL
10 mM	0.3161 mL	1.5806 mL	3.1613 mL
50 mM	0.0632 mL	0.3161 mL	0.6323 mL

Please select the appropriate solvent to prepare the stock solution, according to the solubility of the product in different solvents. Please use it as soon as possible.

Note: The dilution table applies only to solid products. For liquid products, please calculate the stock solution based on the stated concentration and/or density.

Inhibitor · Natural Compounds · Compound Libraries · Recombinant Proteins

This product is for Research Use Only · Not for Human or Veterinary or Therapeutic Use

Tel: 781-999-4286 E_mail: info@targetmol.com Address: 34 Washington Street, Wellesley Hills, MA 02481