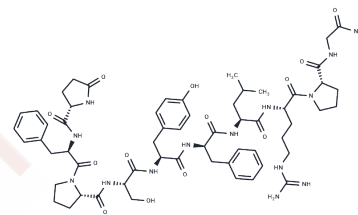


[D-Phe2,6, Pro3]-LH-RH

## Chemical Properties

CAS No. : 64789-67-9  
 Formula: C59H80N14O13  
 Molecular Weight: 1193.35  
 Storage: Keep away from moisture  
 Powder: -20°C for 3 years | In solvent: -80°C for 1 year  
 Actual storage temperature shall be subject to the COA.



## Biological Description

Description	[D-Phe2,6, Pro3]-LH-RH is a potent antagonist of luteinizing hormone-releasing hormone (LHRH).
Targets(IC50)	GNRH Receptor
In vitro	The compound [D-Phe2,6, Pro3]-LH-RH demonstrates agonistic activity by binding to gonadotropin-releasing hormone receptors, which stimulates the secretion of luteinizing hormone and follicle-stimulating hormone, thereby increasing the synthesis of testosterone and estrogen.
In vivo	"[D-Phe2,6, Pro3]-LH-RH (300 mg/monkey, SC, 50 mg/injection; six injections) effectively suppresses spontaneous preovulatory gonadotropin peaks, thereby preventing ovulation in rhesus monkeys [1]. A single dose of [D-Phe2,6, Pro3]-LH-RH (750 µg administered at 12:00 h on proestrus day) achieves 100% inhibition of ovulation in rats [1]."

## Preparing Stock Solutions

	1mg	5mg	10mg
1 mM	0.838 mL	4.1899 mL	8.3798 mL
5 mM	0.1676 mL	0.838 mL	1.676 mL
10 mM	0.0838 mL	0.419 mL	0.838 mL
50 mM	0.0168 mL	0.0838 mL	0.1676 mL

Please select the appropriate solvent to prepare the stock solution, according to the solubility of the product in different solvents. Please use it as soon as possible.

Note: The dilution table applies only to solid products. For liquid products, please calculate the stock solution based on the stated concentration and/or density.

**Inhibitor · Natural Compounds · Compound Libraries · Recombinant Proteins**

This product is for Research Use Only · Not for Human or Veterinary or Therapeutic Use

Tel:781-999-4286 E\_mail:info@targetmol.com Address:34 Washington Street,Wellesley Hills,MA 02481