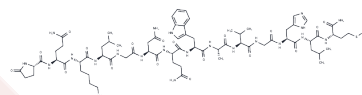


[Lys3]-Bombesin

Chemical Properties

CAS No. :	66839-66-5
Formula:	C71H110N22O18S
Molecular Weight:	1591.84
Storage:	Keep away from moisture Powder: -20°C for 3 years In solvent: -80°C for 1 year <small>Actual storage temperature shall be subject to the COA.</small>



Biological Description

Description	[Lys3]-Bombesin is a biologically active peptide used in PET (Positron Emission Tomography) imaging to identify GRPR (gastrin-releasing peptide receptor) positive prostate cancer. The compound, when conjugated with a corresponding monoclonal antibody, can selectively trigger CD64-dependent monocyte and neutrophil-mediated lysis in small cell carcinoma.
Targets(IC50)	Cholecystokinin Receptor

Preparing Stock Solutions

	1mg	5mg	10mg
1 mM	0.6282 mL	3.141 mL	6.282 mL
5 mM	0.1256 mL	0.6282 mL	1.2564 mL
10 mM	0.0628 mL	0.3141 mL	0.6282 mL
50 mM	0.0126 mL	0.0628 mL	0.1256 mL

Please select the appropriate solvent to prepare the stock solution, according to the solubility of the product in different solvents. Please use it as soon as possible.

Note: The dilution table applies only to solid products. For liquid products, please calculate the stock solution based on the stated concentration and/or density.

Inhibitor · Natural Compounds · Compound Libraries · Recombinant Proteins

This product is for Research Use Only · Not for Human or Veterinary or Therapeutic Use

Tel: 781-999-4286 E_mail: info@targetmol.com Address: 34 Washington Street, Wellesley Hills, MA 02481