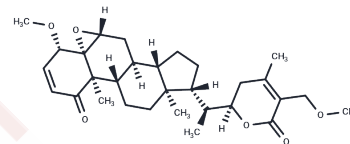


4,27-Dimethyl withaferin A

Chemical Properties

CAS No. :	1777780-95-6
Formula:	C ₃₀ H ₄₂ O ₆
Molecular Weight:	498.65
Storage:	Powder: -20°C for 3 years In solvent: -80°C for 1 year Actual storage temperature shall be subject to the COA.



Biological Description

Description	4,27-Dimethyl withaferin A, a synthetic analog of withanolide natural products, exhibits potential in the study of neurodegenerative diseases[1].
-------------	---

Preparing Stock Solutions

	1mg	5mg	10mg
1 mM	2.0054 mL	10.0271 mL	20.0541 mL
5 mM	0.4011 mL	2.0054 mL	4.0108 mL
10 mM	0.2005 mL	1.0027 mL	2.0054 mL
50 mM	0.0401 mL	0.2005 mL	0.4011 mL

Please select the appropriate solvent to prepare the stock solution, according to the solubility of the product in different solvents. Please use it as soon as possible.

Note: The dilution table applies only to solid products. For liquid products, please calculate the stock solution based on the stated concentration and/or density.

Inhibitor · Natural Compounds · Compound Libraries · Recombinant Proteins

This product is for Research Use Only · Not for Human or Veterinary or Therapeutic Use

Tel:781-999-4286 E_mail:info@targetmol.com Address:34 Washington Street,Wellesley Hills,MA 02481