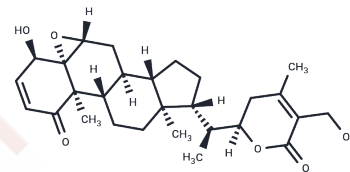


4-epi-Withaferin A

Chemical Properties

CAS No. : 1214886-27-7
 Formula: C₂₈H₃₈O₆
 Molecular Weight: 470.6
 Storage: Powder: -20°C for 3 years | In solvent: -80°C for 1 year
 Actual storage temperature shall be subject to the COA.



Biological Description

Description	4-epi-Withaferin A (compound 28), an analogue of Withaferin A, exhibits enhanced cytotoxicity and cytoprotective heat-shock-inducing activity (HSA), showing promise for investigating protein aggregation-associated diseases by stimulating cellular defense mechanisms [1].
-------------	--

Preparing Stock Solutions

	1mg	5mg	10mg
1 mM	2.1249 mL	10.6247 mL	21.2495 mL
5 mM	0.425 mL	2.1249 mL	4.2499 mL
10 mM	0.2125 mL	1.0625 mL	2.1249 mL
50 mM	0.0425 mL	0.2125 mL	0.425 mL

Please select the appropriate solvent to prepare the stock solution, according to the solubility of the product in different solvents. Please use it as soon as possible.

Note: The dilution table applies only to solid products. For liquid products, please calculate the stock solution based on the stated concentration and/or density.

Inhibitor · Natural Compounds · Compound Libraries · Recombinant Proteins

This product is for Research Use Only · Not for Human or Veterinary or Therapeutic Use

Tel: 781-999-4286 E_mail: info@targetmol.com Address: 34 Washington Street, Wellesley Hills, MA 02481