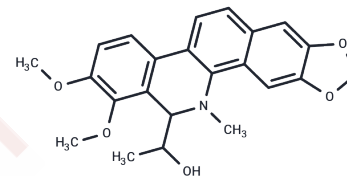


## 6-(1-Hydroxyethyl)-5,6-dihydrochelerythrine

### Chemical Properties

CAS No. :	2715007-88-6
Formula:	C <sub>23</sub> H <sub>23</sub> N <sub>5</sub> O
Molecular Weight:	393.43
Storage:	Powder: -20°C for 3 years   In solvent: -80°C for 1 year Actual storage temperature shall be subject to the COA.



### Biological Description

Description	6-(1-Hydroxyethyl)-5,6-dihydrochelerythrine, an alkaloid, significantly alters the characteristics of early endosomes, mitochondria, and autophagosomes in Parkinson's Disease patient-derived olfactory cells [1].
Targets(IC50)	Autophagy

### Preparing Stock Solutions

	1mg	5mg	10mg
1 mM	2.5417 mL	12.7087 mL	25.4175 mL
5 mM	0.5083 mL	2.5417 mL	5.0835 mL
10 mM	0.2542 mL	1.2709 mL	2.5417 mL
50 mM	0.0508 mL	0.2542 mL	0.5083 mL

Please select the appropriate solvent to prepare the stock solution, according to the solubility of the product in different solvents. Please use it as soon as possible.

Note: The dilution table applies only to solid products. For liquid products, please calculate the stock solution based on the stated concentration and/or density.

**Inhibitor · Natural Compounds · Compound Libraries · Recombinant Proteins**

This product is for Research Use Only · Not for Human or Veterinary or Therapeutic Use

Tel:781-999-4286 E\_mail:info@targetmol.com Address:34 Washington Street,Wellesley Hills,MA 02481