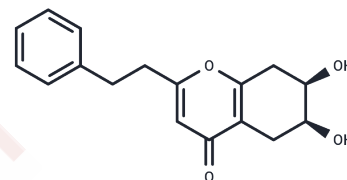


6,7-Dihydroxy-2-(2-phenylethyl)-5,6,7,8-tetrahydrochromone

Chemical Properties

CAS No. : 626236-07-5
 Formula: C₁₇H₁₈O₄
 Molecular Weight: 286.32
 Storage: Powder: -20°C for 3 years | In solvent: -80°C for 1 year
 Actual storage temperature shall be subject to the COA.



Biological Description

Description	6,7-Dihydroxy-2-(2-phenylethyl)-5,6,7,8-tetrahydrochromone is a naturally occurring chromone derivative isolated from the withered wood of <i>Aquilaria sinensis</i> [1].
-------------	---

Preparing Stock Solutions

	1mg	5mg	10mg
1 mM	3.4926 mL	17.463 mL	34.926 mL
5 mM	0.6985 mL	3.4926 mL	6.9852 mL
10 mM	0.3493 mL	1.7463 mL	3.4926 mL
50 mM	0.0699 mL	0.3493 mL	0.6985 mL

Please select the appropriate solvent to prepare the stock solution, according to the solubility of the product in different solvents. Please use it as soon as possible.

Note: The dilution table applies only to solid products. For liquid products, please calculate the stock solution based on the stated concentration and/or density.

Inhibitor · Natural Compounds · Compound Libraries · Recombinant Proteins

This product is for Research Use Only · Not for Human or Veterinary or Therapeutic Use

Tel: 781-999-4286 E_mail: info@targetmol.com Address: 34 Washington Street, Wellesley Hills, MA 02481